







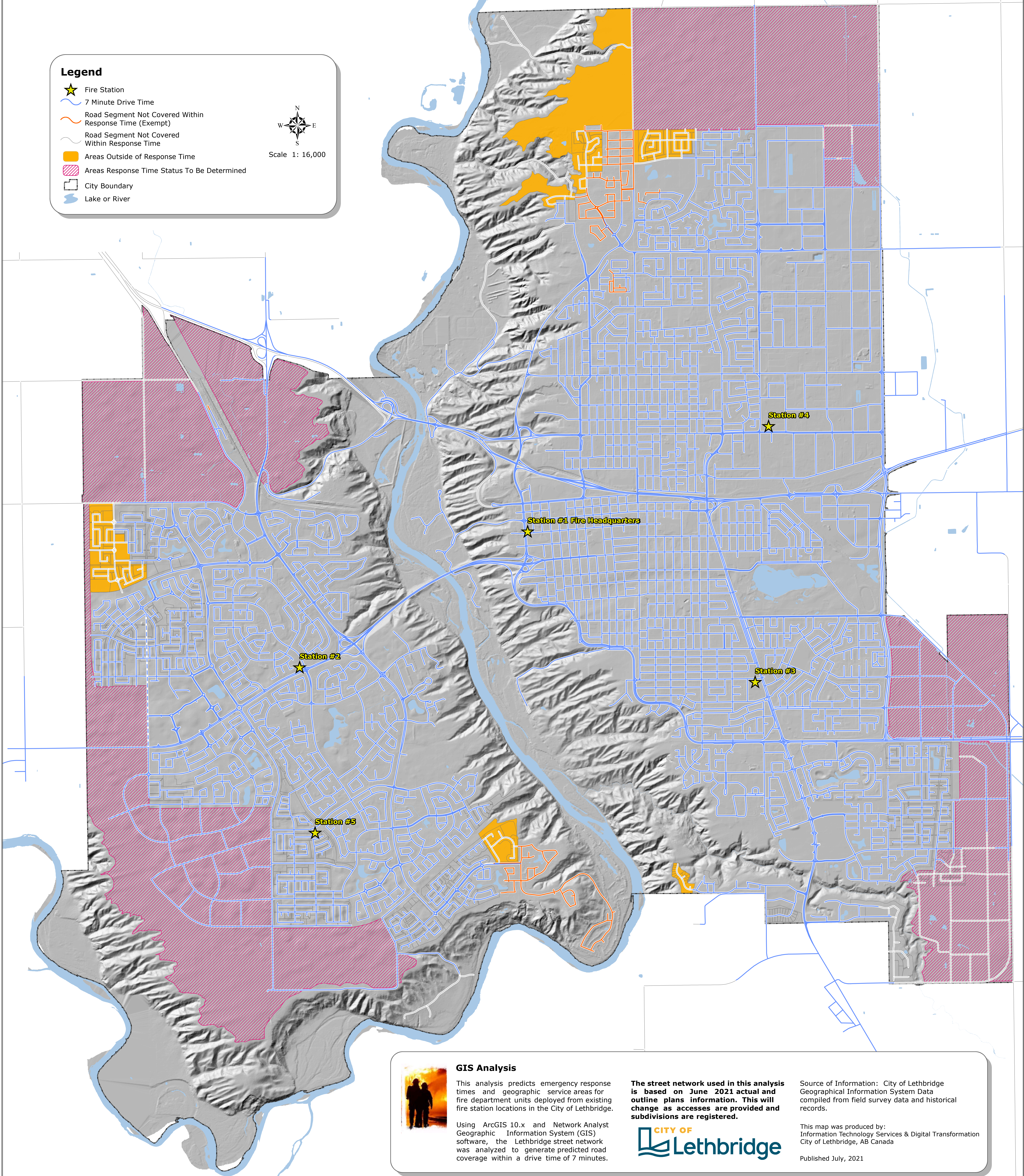
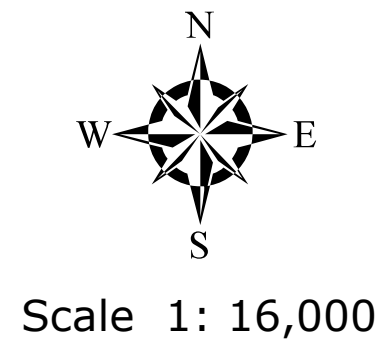


# CITY OF LETHBRIDGE FIRE RESPONSE TIME ANALYSIS

JULY 2021

## Legend

-  Fire Station
-  7 Minute Drive Time
-  Road Segment Not Covered Within Response Time (Exempt)
-  Road Segment Not Covered Within Response Time
-  Areas Outside of Response Time
-  Areas Response Time Status To Be Determined
-  City Boundary
-  Lake or River



### GIS Analysis

This analysis predicts emergency response times and geographic service areas for fire department units deployed from existing fire station locations in the City of Lethbridge.

Using ArcGIS 10.x and Network Analyst Geographic Information System (GIS) software, the Lethbridge street network was analyzed to generate predicted road coverage within a drive time of 7 minutes.

**The street network used in this analysis is based on June 2021 actual and outline plans information. This will change as accesses are provided and subdivisions are registered.**



Source of Information: City of Lethbridge Geographical Information System Data compiled from field survey data and historical records.

This map was produced by: Information Technology Services & Digital Transformation City of Lethbridge, AB Canada

Published July, 2021