

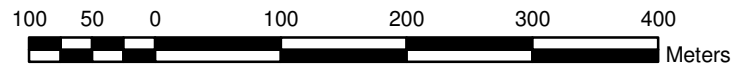
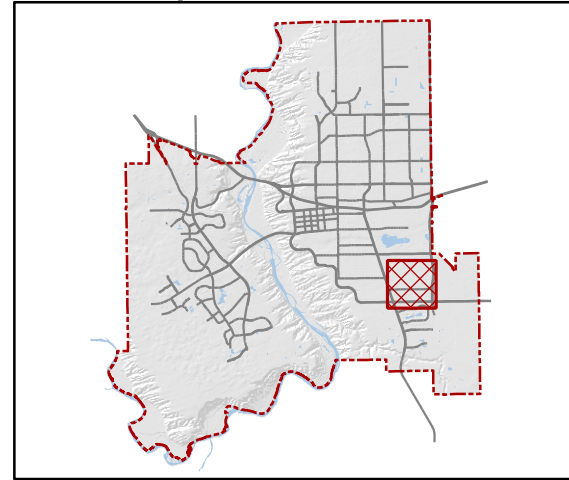


CITY OF
Lethbridge

REDWOOD

~ NEIGHBOURHOOD MAP SERIES ~

Location Map



Legend

- | | |
|---------------|-----------------|
| Cemetery | Bridges |
| Golf Course | Railway |
| Hospital | City Boundary |
| Recycle Depot | Lake or River |
| | Parcel Boundary |

Aquatic Facilities

- Indoor Pool
- Outdoor Pool

Educational Facilities

- Holy Spirit Catholic School Division
- Lethbridge School District No. 51
- Other

Emergency Services

- Lethbridge Fire Department
- Lethbridge Regional Police Service
- RCMP Lethbridge Detachment

Recreational Facilities

- Ball Diamond
- Football Field
- Ice Centre
- Rugby Pitch
- Soccer Pitch

Greenspace

- Park
- River Valley Parkland
- School Grounds

Notes

Neighbourhood maps do not correspond to or identify neighbourhoods that are governed by Neighbourhood Redevelopment Plans, Area Structure Plans, Outline Plans, or Comprehensive Plans. To learn more about plans that might be in effect for your neighbourhood, please see Major Plans & Maps in the Doing Business, Planning and Development of Property section.

This map is illustrative only. The City of Lethbridge offers this information in good faith, but makes no warranty or representation, expressed or implied, with regard to the correctness, accuracy and/or reliability of this data.

Source of Information: City of Lethbridge Geographical Information System Data - compiled from field survey data and historical records.

All rights reserved. No part of this map may be reproduced in any form or by any means without the written consent from the City of Lethbridge.

