

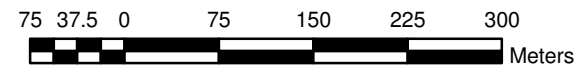
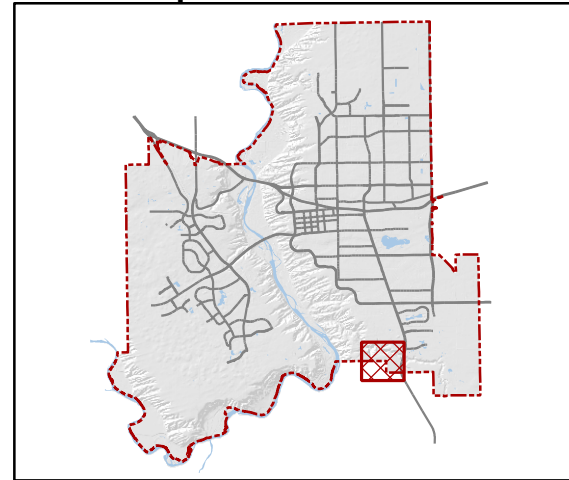


# CITY OF Lethbridge

## SANDSTONE RIDGE & SOUTHRIDGE

~ NEIGHBOURHOOD MAP SERIES ~

### Location Map



### Legend

- |               |                 |
|---------------|-----------------|
| Cemetery      | Bridges         |
| Golf Course   | Railway         |
| Hospital      | City Boundary   |
| Recycle Depot | Lake or River   |
|               | Parcel Boundary |
- 
- |                                      |                                |
|--------------------------------------|--------------------------------|
| <b>Aquatic Facilities</b>            | <b>Recreational Facilities</b> |
| Indoor Pool                          | Ball Diamond                   |
| Outdoor Pool                         | Football Field                 |
|                                      | Ice Centre                     |
| <b>Educational Facilities</b>        | Rugby Pitch                    |
| Holy Spirit Catholic School Division | Soccer Pitch                   |
| Lethbridge School District No. 51    |                                |
| Other                                |                                |
| <b>Emergency Services</b>            | <b>Greenspace</b>              |
| Lethbridge Fire Department           | Park                           |
| Lethbridge Regional Police Service   | River Valley Parkland          |
| RCMP Lethbridge Detachment           | School Grounds                 |

### Notes

Neighbourhood maps do not correspond to or identify neighbourhoods that are governed by Neighbourhood Redevelopment Plans, Area Structure Plans, Outline Plans, or Comprehensive Plans. To learn more about plans that might be in effect for your neighbourhood, please see Major Plans & Maps in the Doing Business, Planning and Development of Property section.

This map is illustrative only. The City of Lethbridge offers this information in good faith, but makes no warranty or representation, expressed or implied, with regard to the correctness, accuracy and/or reliability of this data.

Source of Information: City of Lethbridge Geographical Information System Data - compiled from field survey data and historical records.

All rights reserved. No part of this map may be reproduced in any form or by any means without the written consent from the City of Lethbridge.

