

City of Lethbridge

# 2022

## ANNUAL REPORT

### HIGHLIGHTS

December 31, 2022  
Alberta, Canada



City of Lethbridge  
910 - 4th Avenue South  
Lethbridge, Alberta, T1J 0P6  
[lethbridge.ca](http://lethbridge.ca)  
[facebook.com/cityoflethbridge](https://facebook.com/cityoflethbridge)  
[twitter.com/LethbridgeCity](https://twitter.com/LethbridgeCity)

The Annual Report is produced by the  
Treasury & Financial Services  
department of the City of Lethbridge  
in cooperation with all civic  
departments and agencies.

The City of Lethbridge acknowledges that we are gathered on the lands of the Blackfoot people of the Canadian Plains and pays respect to the Blackfoot people past, present and future while recognizing and respecting their cultural heritage, beliefs and relationship to the land. The City of Lethbridge is also home to the Métis Nation of Alberta, Region III.



Lethbridge River Valley

# TABLE OF CONTENTS

## INTRODUCTION

Mayor's Message	2
City Organization	3
2021-2025 City Council	4

## ECONOMIC OVERVIEW

Population & Residential Assessments	6
Unemployment Rates & Building Permits	7

## FINANCIAL HIGHLIGHTS

City Treasurer's Message	8
Understanding & Interpreting Financial Statements	9
Property Tax Information	10
Summary of Financial Position	11
Revenues	12
Expenses	14
Debenture Debt	16

## AWARDS & ACHIEVEMENTS

17

The City of Lethbridge's 2022 Annual Report Highlights is designed to simplify and communicate financial information, operating results, achievements and successes to the citizens of Lethbridge.

The condensed financial information presented in this report has been collected from the City of Lethbridge's 2022 Annual Report. For more information, the 2022 Annual Report can be found at [lethbridge.ca](https://lethbridge.ca).

# MAYOR'S MESSAGE



Mayor Blaine Hyggen

On behalf of Lethbridge City Council, I am pleased to bring you the 2022 Annual Report Highlights

Results of the 2022 Community Satisfaction survey showed that 90 per cent of respondents rank their quality of life in Lethbridge as good or very good. That survey and this report are both great avenues to show appreciation for all of the efforts City Council, City Administration and all of the dedicated departments put into this organization each and every day.

City Council was happy to unveil its Gateway to Opportunity 2022 Action Plan and pledged an approach that clearly articulates priorities, creates further transparency, reports performance and builds community trust.

In November, Council approved the 2023-2026 Operating Budget. Public safety is the number one concern residents come to Council with and this budget reflects the investment we're making to address those concerns, as well as what is needed to maintain our service levels.

City Council continues to support efforts to attract and retain medical professionals for the community, including a multi-phased marketing campaign designed to sell physicians on the many different benefits of building a life and business in Lethbridge.

A one-of-a-kind partnership between key stakeholders was announced in November to try and tackle the health and social challenges of the city and surrounding areas. The creation of the Intergovernmental Health Table is a proactive step in bringing together invested partners to look at key issues effecting members of the Blood Tribe and Lethbridge communities.

In May 2022, we were pleased to have a grand re-opening at Lethbridge Airport, which is a key piece of

infrastructure in the continued growth of our economy. Council also endorsed a new Airport Incentive Framework designed to find and discuss potential agreements with airlines regarding future options for passengers flying in and out of Lethbridge.

In June, we were pleased to open the new Festival Square Market Plaza in Downtown Lethbridge. The \$1.71 million project was entirely funded through the Province of Alberta's Provincial Municipal Stimulus Program.

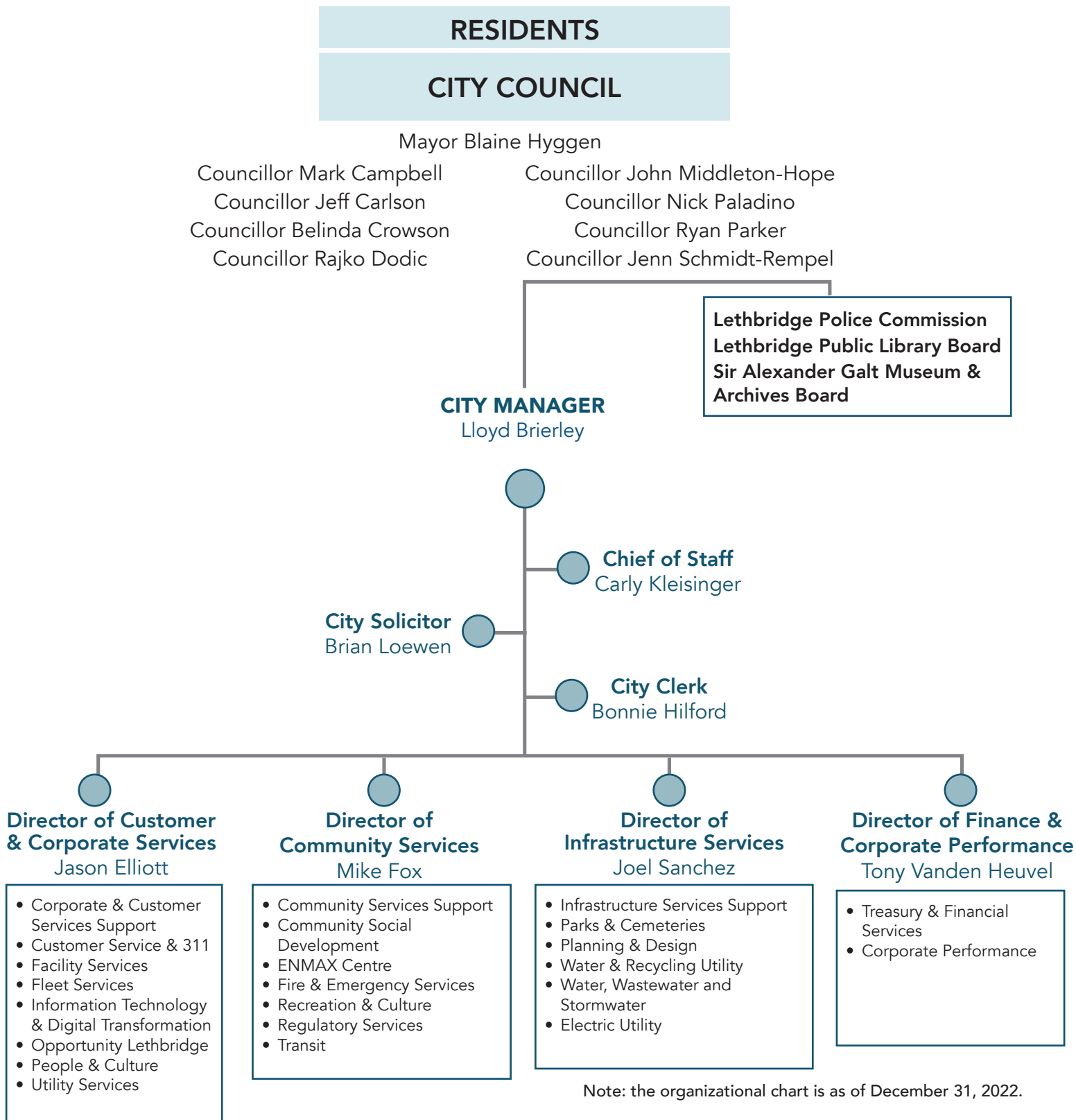
In celebration of National Indigenous Peoples' Day in 2022, we encouraged the community to add a Blackfoot word into their vocabulary. Sikookhotoki (Sik-oo-kotoki) is the Blackfoot word for the land Lethbridge is located on. By bringing attention to the word and working to incorporate it in every day conversation, it helps to recognize Blackfoot culture throughout the city and beyond.

One of the biggest events to grace our city in recent years was the 2022 Tim Hortons Brier. What an absolutely incredible showcase this was for our city. The 2022 Brier generated more than \$10 million of total money spent in Lethbridge. I'd say that's a pretty great return for the \$1 million of cash and in-kind support contributed from the City.

As Lethbridge is and will continue to be the Gateway to Opportunity, this Annual Report is just a sample of all the exciting projects in our city. We eagerly look forward to all the great work ahead in 2023.

Blaine Hyggen  
Mayor

## Legislative & Administrative Organization Chart



# CITY COUNCIL

## 2021-2025



Back Row (L-R):  
Councillor Ryan Parker  
Councillor John Middleton-Hope  
Councillor Jeff Carlson  
Councillor Nick Paladino

Front Row (L-R):  
Councillor Mark Campbell  
Councillor Belinda Crowson  
Mayor Blaine Hyggen  
Councillor Rajko Dodic  
Councillor Jenn Schmidt-Rempel

**About City Council:** City Council consists of nine members: the Mayor and eight Councillors, who are elected at large. Lethbridge City Council was elected in October 2021 and will serve a four-year term.

## ACTION PLAN 2021-2025

### GATEWAY TO OPPORTUNITY

We are a City that works together with our community and partners to ensure that Lethbridge is a leader in environmental stewardship, innovation and active leadership. We are recognized as being a safe, healthy, vibrant, prosperous, economically viable place where all people can fully participate in community life.

*Vision Statement from the City of Lethbridge's Municipal Development Plan 2021.*

As Lethbridge City Council, to complete the work outlined in our Council Action Plan we will:

- Govern
- Coordinate
- Enable
- Advocate
- Promote

To view the complete 2021-2025 Lethbridge City Council Action Plan, visit our website [www.lethbridge.ca](http://www.lethbridge.ca)

## ACTION PLAN 2021-2025 GATEWAY TO OPPORTUNITY

In 2021, Council updated its Municipal Development Plan (MDP) – a process that engaged staff, stakeholders and the community to create the vision for a future Lethbridge. City Council's Action Plan, the Gateway to Opportunity was created using the MDP as the strategic guiding document. It also takes into consideration the concerns heard from the election campaign, balancing both immediate needs and longer-term aspirations.

### COUNCIL STRATEGIC FOCUS AREAS

Economically prosperous

Actively encourage the development and diversification of the local economy

Healthy and diverse

Prioritize health-supporting developments and the wellbeing of all residents

Culturally vibrant

Support the creation of a thriving, dynamic environment that exudes a sense of place and of community identity and belonging

Well designed

Strive to enhance and sustain a quality built environment

Environmentally responsible

Strive to enhance and sustain the natural environment

Supports to the region

Contribute towards shared regional objectives

### Strategic Leadership & Partnerships

# ECONOMIC OVERVIEW

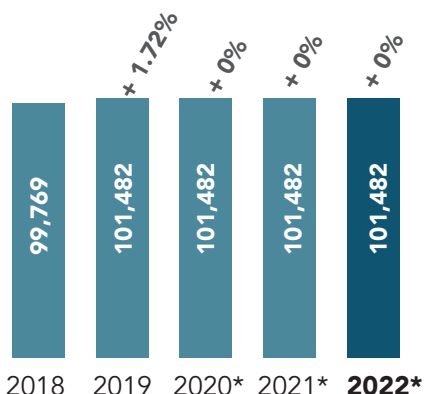


Lethbridge is in southern Alberta and has a population of just over 100,000. There are many concrete reasons Lethbridge is a great location. With its low cost of living, mild climate, short commute times and wide range of recreation and culture opportunities, Lethbridge has something for everyone to achieve a perfect balance of work and life. The combination of city amenities and small-town charm, the easy lifestyle it affords and the sense of community it fosters continues to demonstrate that Lethbridge is the place to live.

## POPULATION

Lethbridge broke the 100,000 threshold in 2019 and had a population of 101,482. The City of Lethbridge did not conduct a census in 2020 - 2022.

### Total Population



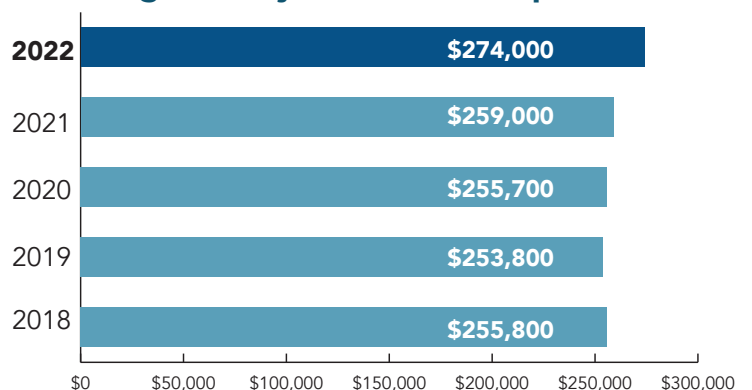
\* The City of Lethbridge did not conduct a census from 2020 - 2022.

## RESIDENTIAL ASSESSMENTS

Your property assessment is an estimate of the price your property may have sold for on the open market by a willing seller to a willing buyer as of July 1 of the previous year. Assessed values reflect the physical condition of the property as of December 31, of the previous year.

Your property assessment is used to determine your share of the total property taxes your City needs to provide the services and infrastructure, as established in the annual budget.

### Median Property Assessment for Single Family Residential Properties



# ECONOMIC OVERVIEW

## UNEMPLOYMENT RATE

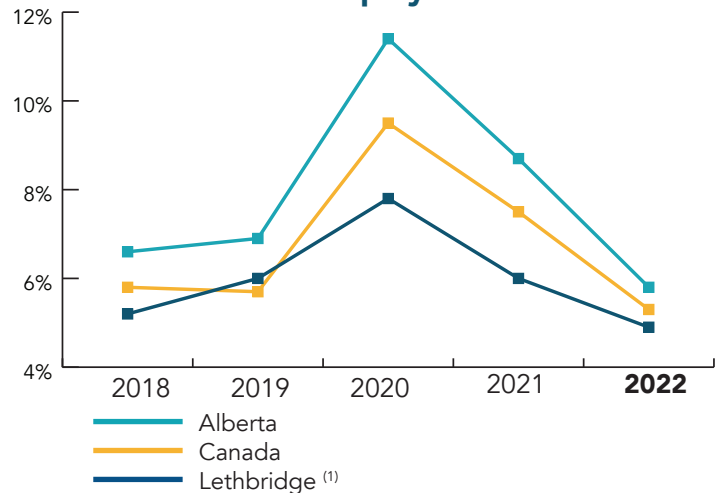
The Lethbridge economy continues to improve as the impact of COVID-19 begins to wane and circumstances begin to resemble to pre-pandemic period. In 2022, the annual unemployment rate in the Lethbridge region is low at 4.9% versus the national average of 5.3% and consistently lower than the Alberta rate of 5.8%.

## DEVELOPMENT AND CONSTRUCTION

Building permits are an important leading indicator as to where the construction market is headed. Development and construction highlights for the 2022 include:

- The value of construction in the community was at \$215 million, versus \$307 million in 2021.
- Commercial permit values saw an increase to \$33 million in 2022, from \$31 million in 2021.
- Industrial permit values totaled \$7.7 million in the most recent calendar year, an decrease over 2021 from \$11.7 million.

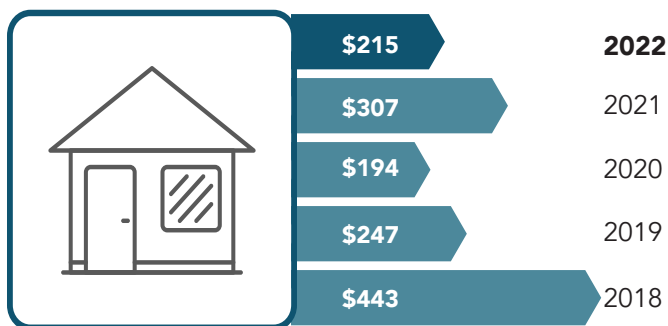
## Annual Unemployment Rates



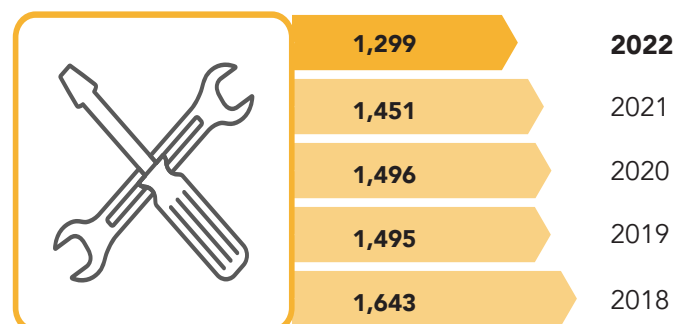
Source: Statistics Canada

(1) The unemployment rates include Lethbridge & Medicine Hat regions (for 2018-2019) and includes the Lethbridge region for 2020-2022.

## Building Permit Values (in millions of dollars)



## Number of Building Permits Issued



City Hall Sunrise (Sheila Enevold)

# FINANCIAL HIGHLIGHTS

## CITY TREASURER'S MESSAGE



Darrell Mathews - City Treasurer

The City of Lethbridge's 2022 Annual Report Highlights is designed to simplify and communicate our financial information, operating results, achievements and successes to the citizens of Lethbridge.

The financial information in this report has been summarized from the audited financial statements in the City's 2022 Annual Report that was prepared in accordance with Canadian public sector accounting standards. The detailed Annual Report can be found on the City's website at [lethbridge.ca](http://lethbridge.ca).

The City provides many services to our citizens such as water, streets, transit, police, fire, ambulance, parks, recreation and culture facilities, just to name a few. You may ask, where does the City get the money to pay for these services? To find out, take a peek at page 12, there you will see that the City collected \$505 million of revenue in 2022. Of this revenue collected, 46% was from sales and user charges which comes from the fees on your utility bill and user fees for recreation and culture facilities.

Now that you know a little bit about where the City's money comes from, you may ask how much do these services cost? Flip over to page 14, there you will see that City expenses cost \$488 million in 2022. Of the total City expenses, 22% is for electric which provides several electrical utility services that can be segregated into two major functions: transmission and distribution. Transmission provides Lethbridge with access to the

provincial electricity grid. Distribution involves the final step of delivering electricity from one of the City's 6 substations to homes and businesses.

Much like everyone else, the City has come through two years of pandemic and economic uncertainty. The adjustments that were made during 2022 reminds us how strong, resilient and responsive the City of Lethbridge is to the needs of our community.

The City appreciates the ongoing partnerships and collaboration efforts that helped make Lethbridge a great place to live, learn, work and play. I would like to acknowledge the combined effort of City Council, Administration and our staff as we conclude the year 2022. The work we have accomplished this year and the progress we have made gives me confidence the City will position itself to make the most of its opportunities to move forward successfully in 2023.

As you review our Annual Report Highlights, I hope it helps to enhance your understanding of the City of Lethbridge finances. The City takes pride in being fiscally responsible and continues to achieve a strong financial position. I hope you enjoy reading this report and find its content useful.

Respectfully submitted,

A handwritten signature of Darrell Mathews in dark ink, written in a cursive style.

Darrell Mathews, CPA, CMA, CIA  
City Treasurer

## UNDERSTANDING & INTERPRETING CITY OF LETHBRIDGE FINANCIAL STATEMENTS

On an annual basis, the City of Lethbridge Financial Statements are prepared in accordance with provisions set out in the Municipal Government Act (MGA) and must comply with Canadian public sector accounting standards, which provides guidance for financial and other information reported by public sectors.

The condensed financial information presented in this report has been collected from the City of Lethbridge's 2022 Annual Report and is for highlight purposes only.

There are four main components to the City's Financial Statements:

### 1. Statement of Financial Position:

The Statement of Financial Position reports on the City's assets, liabilities and municipal equity at the end of each year. This statement will give the reader an indication whether or not the City has the necessary assets to provide services to its citizens in the future and meet its current financial commitments.

### 2. Statement of Operations:

The Statement of Operations reports on revenues, expenses and results of operations for the entire year.

### 3. Statement of Net Financial Assets (Debt):

The Statement of Net Financial Assets (Debt) reconciles the excess of revenue over expenses to the net financial assets (financial resources available to finance future transactions). Positive net assets are an indicator that the City is able to meet its liabilities and obligations out of existing assets and has resources to use in the future. Negative net assets (net debt) is an indicator that future resources are required to pay for past transactions events.

### 4. Statement of Cashflows:

The Statement of Cashflows identifies where the City's cash came from and how it was used. This statement explains the change in cash and cash equivalents since the previous reporting period.

## Notes to the Financial Statements

The notes to the Financial Statements contain important information and explanations, some of which are required by legislation and regulation. The notes highlight various aspects and provide background information on the impacts of specific values in the Financial Statements.

## Additional Details

City Council is responsible for ensuring that City Administration fulfills its responsibilities for financial reporting, internal control and risk management. To assist City Council with these responsibilities, a City Council appointed Audit Committee has been established.

The Audit Committee oversees the activities of the external auditors to help ensure Administration's accountability to Council. The Committee reviews the audit plan, year-end audit results, summary of audit differences, the Independent Auditors' report and the management letter. To fulfill the City's provincially legislated audit requirements, the Committee engages the external auditor, KPMG LLP who carries out the audit of the City of Lethbridge's financial statements, in accordance with generally accepted auditing standards. The external auditors have full and unrestricted access to the Audit Committee to discuss their audit and related findings, as to the integrity of the City's annual Consolidated Financial Statements and related processes.

Based on the Committee's recommendation, City Council approved the 2022 City of Lethbridge Annual Report at its meeting on April 18, 2023.

## WHO USES THE CITY OF LETHBRIDGE FINANCIAL STATEMENTS AND WHY?

### City Residents:

Lethbridge residents use the City's Financial Statements to help them understand how financial resources have been used to provide services to their community.

### City Council:

The City's Financial Statements provides information to City Council on its financial position. This information has been validated by a professional, independent auditor.

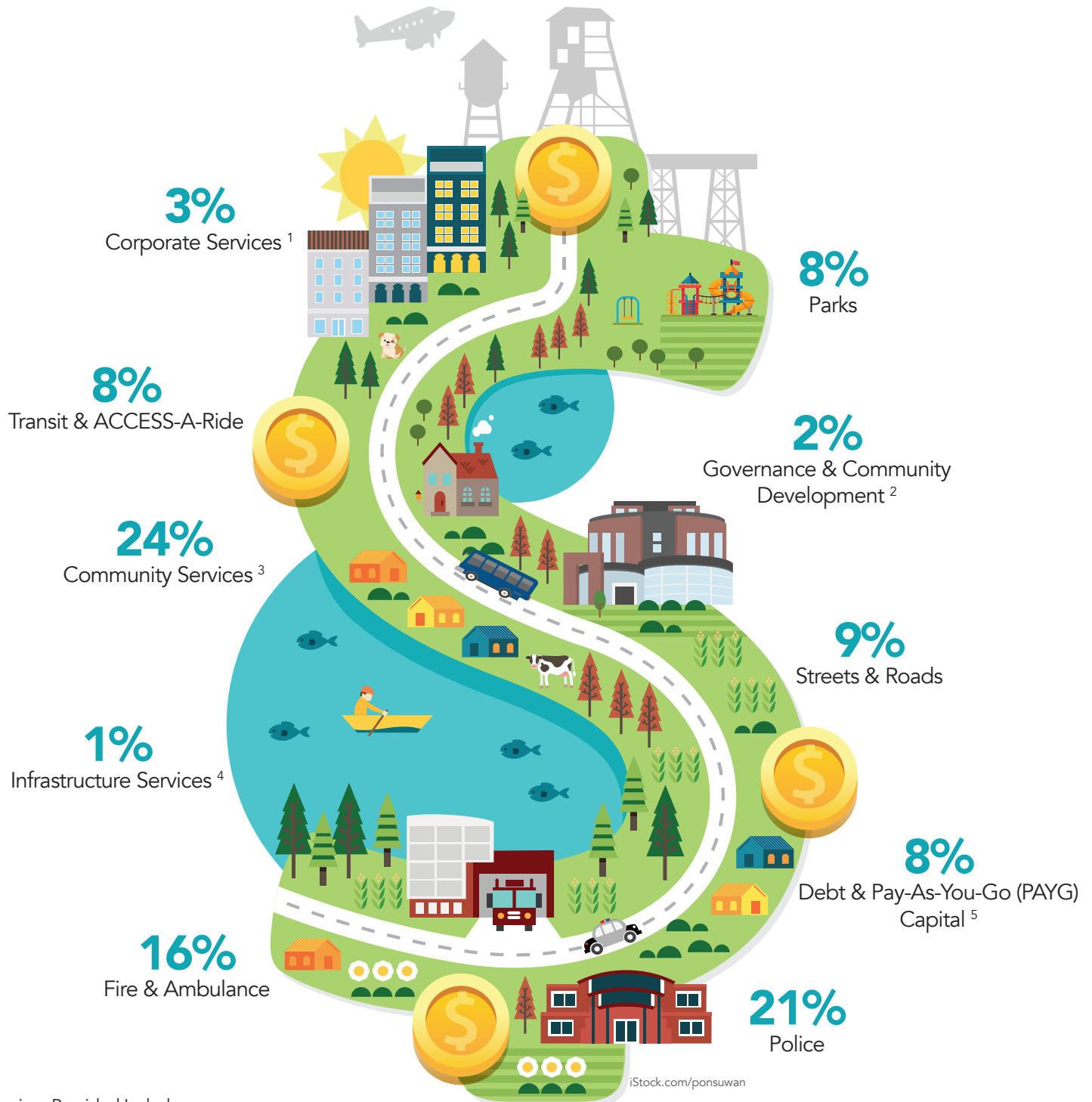
### Governments:

Senior levels of government use the City's Financial Statements to determine if funds were used in accordance with the funding requirements.

For more information, the 2022 Annual Report can be found at:  
[www.lethbridge.ca](http://www.lethbridge.ca).

# FINANCIAL HIGHLIGHTS

## WHAT YOUR 2022 MUNICIPAL PORTION OF YOUR TAX DOLLARS WERE USED FOR



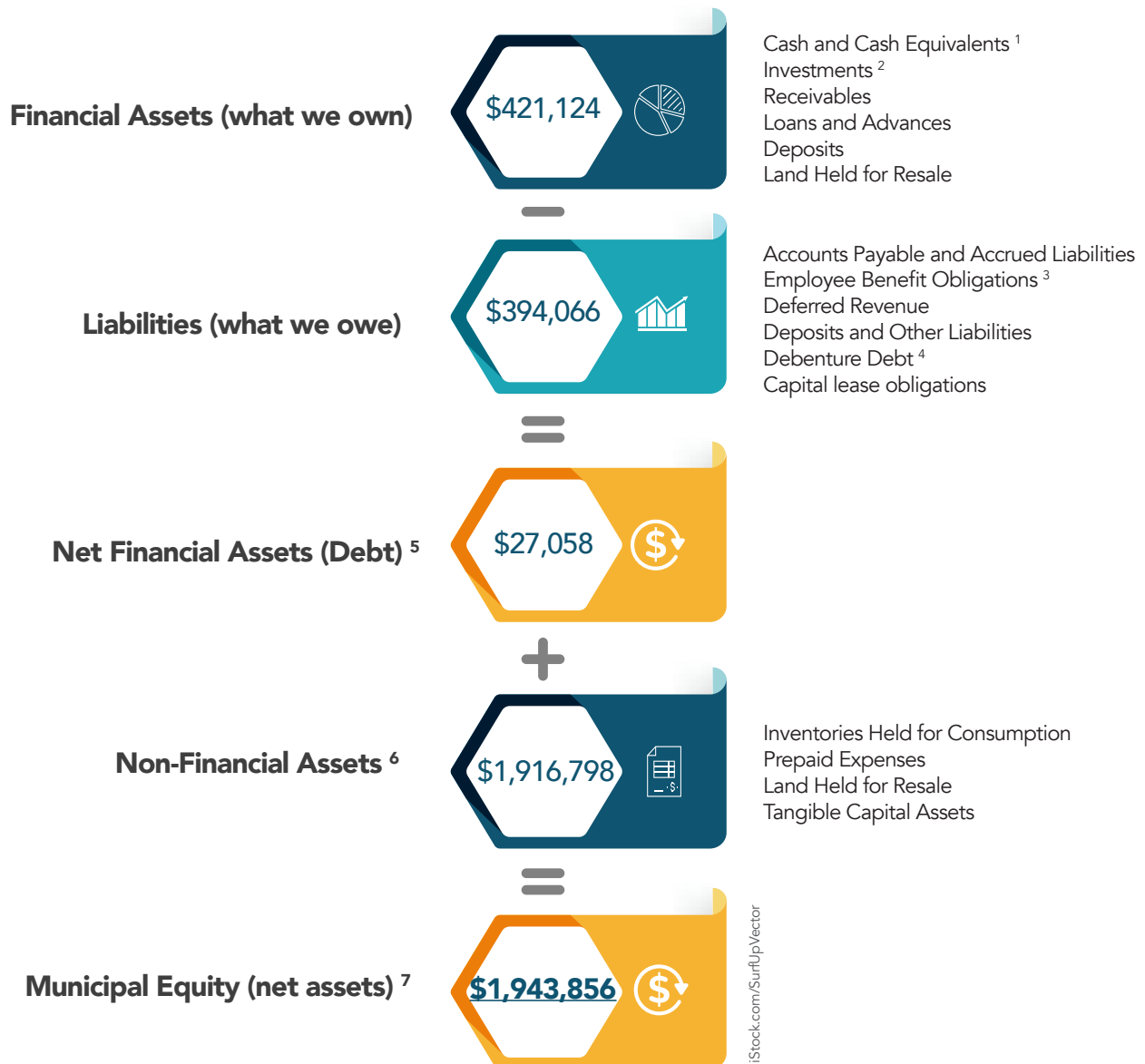
Services Provided Include:

1. Information Technology & Digital Transformation, Finance and Corporate Performance, People & Culture (Human Resources), etc.
2. City Council, City Manager, City Solicitor, Planning & Design, etc.
3. Recreation & Culture, ENMAX Centre, Regulatory Services, Cemetery Services, Lethbridge Public Library, Galt Museum & Archives, etc.
4. Airport, Community Lighting, Storm Water, Asset Management, Urban Construction, Parking, etc.
5. PAYG - costs associated with capital projects that are recurring, relatively small scale or for short lived improvements.

# FINANCIAL HIGHLIGHTS

## 2022 SUMMARY OF FINANCIAL POSITION (in thousands of dollars)

Source: City of Lethbridge Consolidated Statement of Financial Position for the year ended December 31, 2022



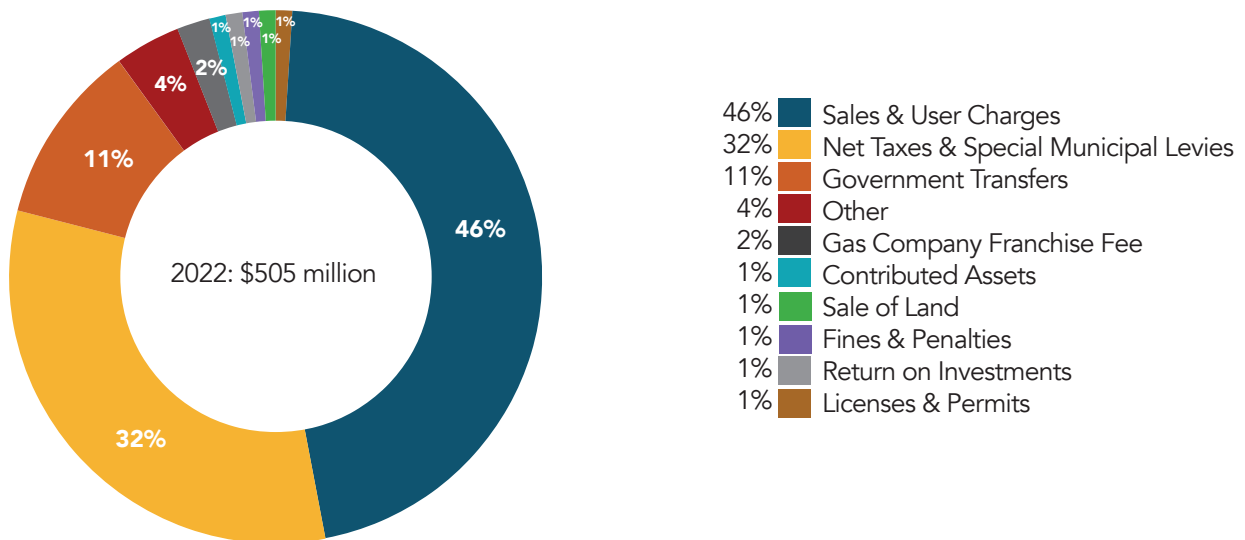
### Notes:

1. Cash includes cash on hand, balances with financial institutions and short term investments with original maturities less than three months.
2. Investments consist primarily of money market instruments such as Guaranteed Investments Certificates, government bonds, financial institution bonds and term receipts. These investments are in qualifying institutions as defined in the City's investment policy.
3. Employee benefit obligations include vacation, overtime and sick pay.
4. Debenture debt is an external borrowing from the Government of Alberta that is used for capital funding. A by-law must be authorized by City Council prior to any external borrowing.
5. Net Financial Assets - this positive balance is an indication that the City is able to meet its obligations and has resources to use in the future.
6. Non-Financial Assets are not available to discharge existing liabilities and are held for use in the provision of services. They have useful lives extending beyond the current year and are not intended for sale in the ordinary course of operations.
7. Municipal equity reflects the net assets that have accumulated over time. Municipal equity consist of restricted and unrestricted amounts, including the accumulated unrestricted surplus, reserves, equity invested in tangible capital assets and the capital fund.

# FINANCIAL HIGHLIGHTS

## WHERE THE MONEY CAME FROM: 2022 GROSS REVENUE

Source: City of Lethbridge Consolidated Statement of Operations for the year ended December 31, 2022



**Sales & User Charges** are the revenue from the sales of goods and services to individuals, organizations or other governments. This includes utility service charges and user fees for recreation and culture facilities.

**Net Taxes and Special Municipal Levies** are the net municipal portion of all property taxes and grants in lieu of taxes levied or collected.

**Government Transfers** are essentially grants from senior levels of government.

**Other** includes revenues which are not included in the revenue categories defined above.

**Gas Company Franchise Fee** is revenue collected from a utility company that allows the exclusive right to provide services within city boundaries under an agreement and for the use of municipal land upon which the utility system is located.

**Contributed Assets** are tangible capital assets recorded at their fair market value that have been transferred to the City. These contributions are from privately developed subdivisions and include assets such as water systems, wastewater systems, storm systems, roads and parks.

**Sale of Land** includes revenue from lot sales of residential and industrial subdivisions that have been developed by the City.

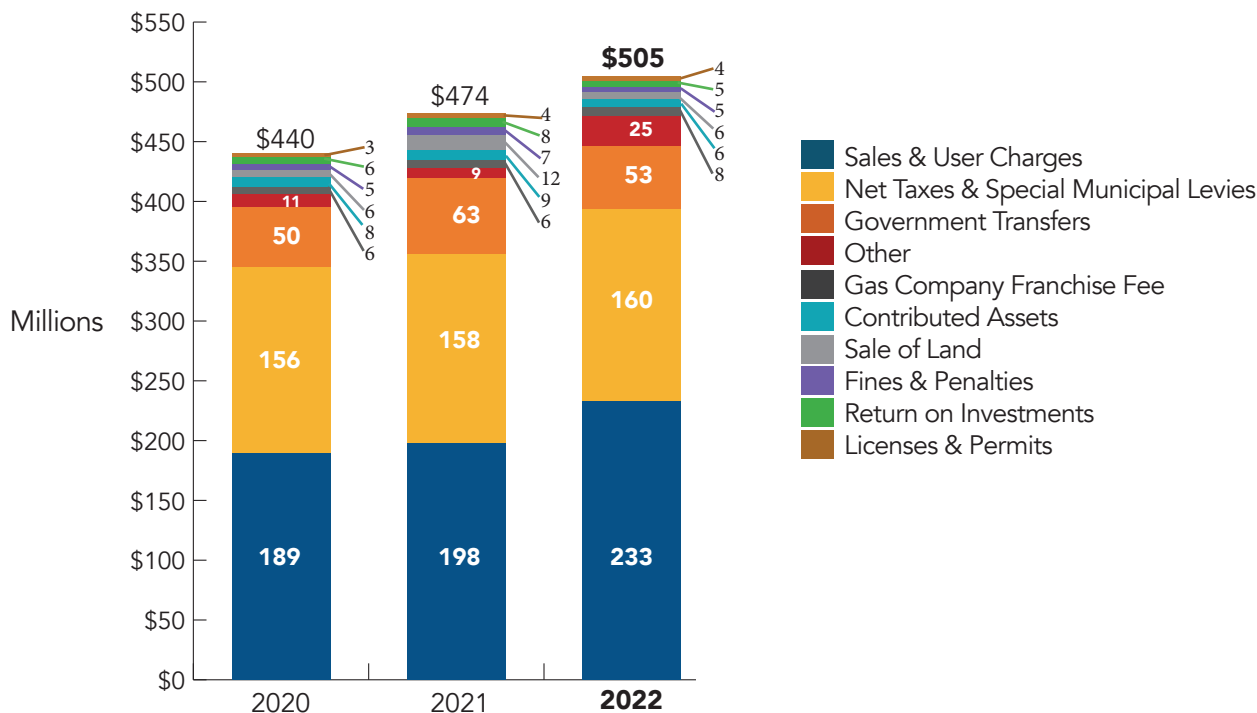
**Fines & Penalties** are revenue collected from the violation of a law or a bylaw. This includes fees for impounded animals, overdue charges for library books and fines generated by the province on behalf of the City.

**Return on Investments** is the net revenue resulting from investments.

**Licenses & Permits** include revenue collected from municipal licenses such as business, taxi, and animal licenses. It also includes revenue collected from permits such as building, construction, demolition, gas, plumbing and electrical permits.

## WHERE THE MONEY CAME FROM: THREE YEAR COMPARISON OF GROSS REVENUE

Source: City of Lethbridge Five Year Summary of Consolidated Revenues



### 2022 Revenue Changes:

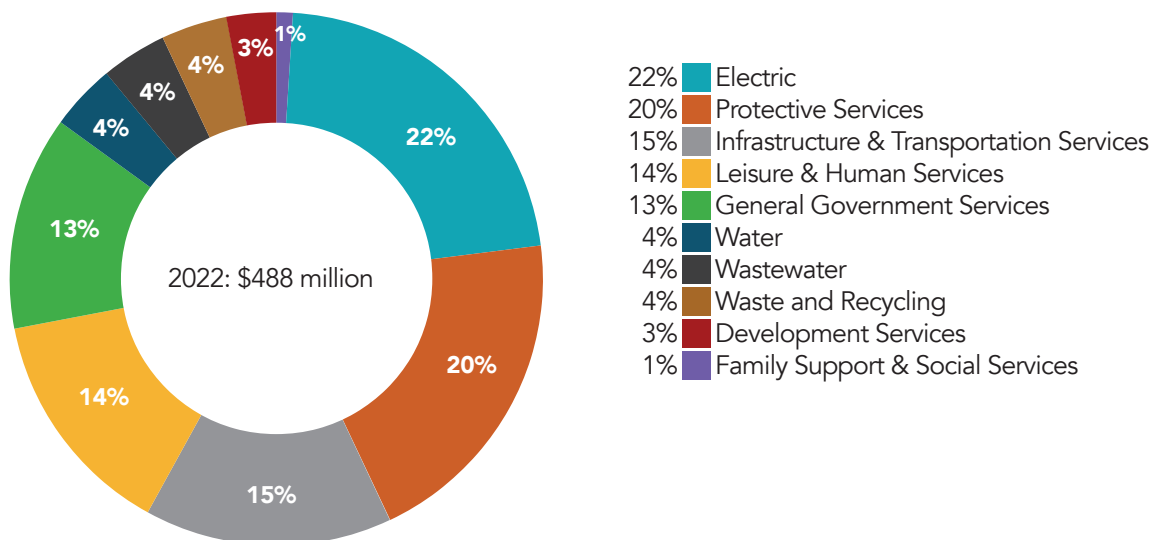
- The overall revenue had an increase of \$30.9 million or 6.5% with total revenue of \$505.3 million (2021 \$474.4 million).
- Sales and user charges increased by \$35.1 million or 17.7% from 2021 and is primarily due to utility revenue increases; electric revenue of \$25.2 million, wastewater revenues of \$0.9 million, offset by water review decrease of \$0.4 million and waste & recycling decrease of \$0.2 million. Other increases in revenues related to operations that were impacted by the pandemic in prior years; ENMAX Centre even revenue increased \$6.3 million, other recreation and cultural facility and program revenue increased \$1.1 million, Transit revenue increased \$0.6 million and Airport revenue increased \$0.3 million. Other increases in revenues are an offsite development increase of \$0.7 million as well as other revenue of \$0.6 million.
- Property tax is a primary revenue source available to the City to pay for municipal services. In 2022, net taxes available for municipal services of \$160 million was \$2 million or 1.24% higher than 2021, and accounted for 31.7% (2021 33.3%) of gross revenue.
- The net tax increase was primarily a result of growth as Council approved budget reductions resulting in a 0% increase in the municipal tax portion of property taxes 2022.
- Government Transfers decreased by \$10 million from 2021 due to timing of government transfers provided to fund operating or capital expenses. These revenues are externally restricted and recorded as a deferred revenue until used for the purpose intended.
- During 2022, the City received land sales of \$5.8 million which was a decrease of \$5.3 million from the previous year (2021 \$11.6 million). The majority of the decrease is related to the timing of residential subdivision development which had a decrease of \$5 million in Sherring, and a decrease related to residential development of \$1 million from The Crossings subdivision, offset by an increase of \$0.2 million from the RiverStone subdivision. Fluctuations from year to year occur due to timing differences created through the development process with residential and industrial subdivisions.

# FINANCIAL HIGHLIGHTS

## WHAT THE MONEY WAS USED FOR: 2022 EXPENSES BY FUNCTION

Source: City of Lethbridge Consolidated Statement of Operations for the year ended December 31, 2022

### 2022 Expenses by Function



**Electric** provides several electrical utility services that can be segregated into two major functions: transmission and distribution. Transmission provides Lethbridge with access to the provincial electricity grid. Distribution involves the final step of delivering electricity from one of the City's 6 substations to homes and businesses. The City is responsible for maintaining 4,800 transformers, 2,500 km of underground lines and 475 km of overhead lines.

**Protective Services** includes dispatch, police, fire, disaster services, ambulance, inspection services, business licenses, parking enforcement, regulatory services and animal control.

**Infrastructure & Transportation Services** includes engineering services, fleet, roadway and parking services, storm sewers, transit and airport.

**Leisure & Human Services** includes recreational and cultural facilities and programs. Also includes library, museum and parks maintenance.

**General Government Services** includes council, legislative and general administration.

**Water** distribution system consists of 590 km of water main and 6 storage reservoirs with pump stations. The water mains and pump stations deliver water to residences and businesses through the city and neighbouring communities. The water treatment plant draws the water supply from the Oldman River and it processes an average of about 53 million litres of high quality drinking water on a daily basis.

**Wastewater** collection system consists of 520 km of sewer and 23 lift stations. The sewer and lift stations convey wastewater from residences and businesses in all areas of the city to the wastewater treatment plant.

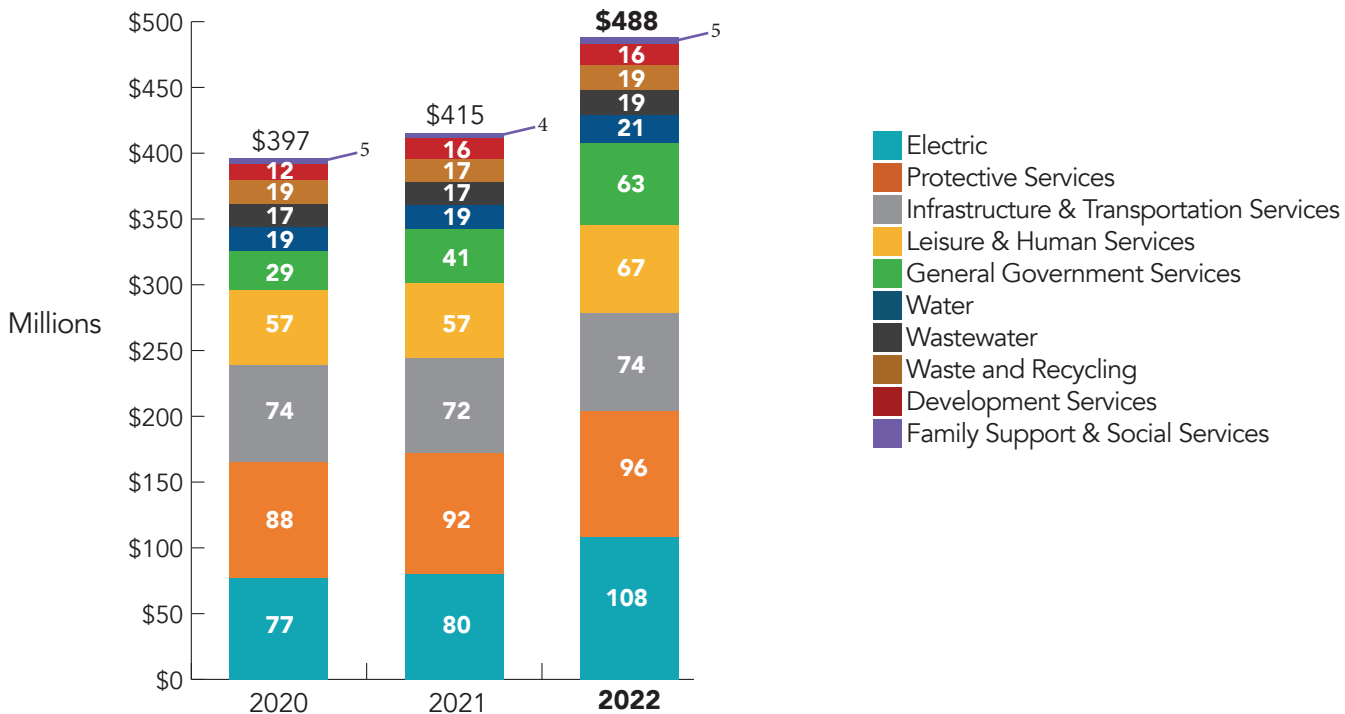
**Waste & Recycling** provides environmentally safe, time responsive and cost effective collection, disposal and recycling services for residents as well as waste collection for commercial customers in Lethbridge.

**Development Services** includes economic development, planning, public housing and land development.

**Family Support & Social Services** includes community and family support, cemeteries and other public health support.

## WHAT THE MONEY WAS USED FOR: THREE YEAR COMPARISON OF EXPENSES

Source: City of Lethbridge Five Year Summary of Consolidated Expenses



### 2022 Expense Changes:

- In 2022, the consolidated expenses of \$488.4 million were \$73.6 million or 17.7% higher than the previous year.
- Electric Utility expenses increased by \$27.3 million from \$80.4 million in 2021 to \$107.7 million in 2022. The increase is primarily due to an increase in transmission fees and energy charges of \$26.9 million and an increase of \$0.4 million in other expenses.
- Protective Services expenses increased by \$4.1 million to \$96.4 million from \$92.3 million in 2021. This was due to additional personnel costs of \$1.8 million, an increase of \$1.3 million in material, supplies and contractual services, and an increase of \$1 million across other expense areas.
- Infrastructure and Transportation expenses increased by \$2.3 million to \$74.1 million from \$71.8 million in 2021. This increase is a result of an increase of \$1.4 million for roads primarily related to the cost of materials and supplies, an increase of \$1 million in contracted services related to Lethbridge Airport projects and operations. These increases are offset by a decrease of \$0.1 million in supplies and other expenses.
- Leisure & Human Services increased by \$10.4 million (18.3%) to a total of \$67.2 million in 2022 (2021 \$56.8 million). This segment was impacted by facility closures and programming changes due to pandemic restrictions in prior operating year
- General Government Services increased by \$21.6 million to \$62.9 million in 2022 from \$41.3 million in 2021. This was due to an increase of \$22.8 million in transfers to other agencies, an increase in materials and supplies of \$0.9 million and contractual services of \$0.5 million due to maintenance activities and an increase of \$1.3 million in amortization expenses. These increases were offset by a decrease of \$3.4 million in personnel costs and a \$0.5 million decrease in other expense areas.
- The Wastewater Utility had a \$2.6 million increase in expenses from \$16.5 million in 2021 to \$19.1 million in 2022. This is primarily due to an increase in contractual services of \$1.2 million for biosolids removal, \$0.5 million increase in materials and supplies and \$0.9 million in other expense categories.

# FINANCIAL HIGHLIGHTS

## DEBENTURE DEBT

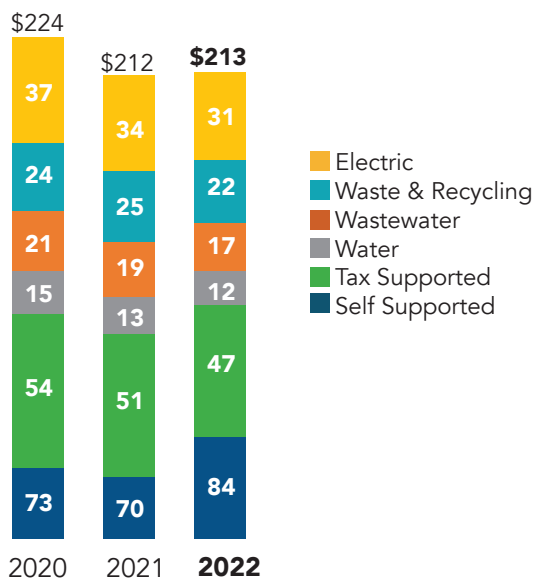
The City of Lethbridge borrows money to help finance capital projects. These loans called debenture debt are borrowed from the Government of Alberta Department of Treasury Board and Finance.

The Municipal Government Act (MGA) establishes limits for municipal debt levels and annual debt servicing costs. The City's debt limit in 2022 was \$666 million.

In 2022, the City's debenture debt was \$213.1 million. This was an increase of \$1 million, 0.45% from the 2021 balance. The debenture debt increase was primarily due to the Lethbridge & District Exhibition-Agri-Food Hub. The 2022 borrowings for capital projects totaled \$20.4 million and included Métis Trail Offsite borrowing and Lethbridge & District Exhibition-Agri-Food Hub. New borrowings were offset by principal loan payments of \$19.4 million.

The City carries levels of debt and debt servicing well below the legislated limit.

### DEBENTURE DEBT (millions)



## THREE YEAR SUMMARY OF DEBENTURE DEBT

Source: City of Lethbridge Five Year Summary of Debenture Debt

(in thousands of dollars)

	2022	2021	2020
<b>GENERAL</b>			
Tax supported			
Recreation & Culture Facilities	\$ 46,438	\$ 50,406	\$ 54,261
Self supported			
Offsites	47,670	49,764	50,388
Lethbridge & District	17,695	-	-
Industrial park servicing	9,369	10,507	11,697
Commercial land servicing	8,693	9,438	10,163
Airport	491	525	566
	130,356	120,640	127,075
<b>UTILITIES</b>			
Electric	30,879	33,810	36,872
Waste & Recycling	22,223	25,000	24,462
Wastewater	17,321	19,247	21,248
Water	12,279	13,379	14,738
	82,702	91,435	97,320
<b>TOTAL DEBT</b>	<b>\$213,058</b>	<b>\$212,076</b>	<b>\$224,395</b>
<b>POPULATION</b>	101,482	101,482	101,482
<b>DEBENTURE DEBT PER CAPITA</b>			
General - mill rate supported	\$ 458	\$ 497	\$ 535
General - self supported	827	692	718
Utilities	815	901	959
	\$ 2,100	\$ 2,090	\$ 2,212
<b>DEBT LIMIT (as per MGA)</b>			
Total debt limit	\$665,665	\$626,994	\$609,788
Total debt (above)	(213,058)	(212,076)	(224,395)
Capital lease obligations	(626)	-	-
<b>DEBT LIMIT UNUSED</b>	<b>\$451,981</b>	<b>\$414,918</b>	<b>\$385,393</b>
Percentage of debt limit used	32.1%	33.8%	36.8%

# AWARDS & ACHIEVEMENTS

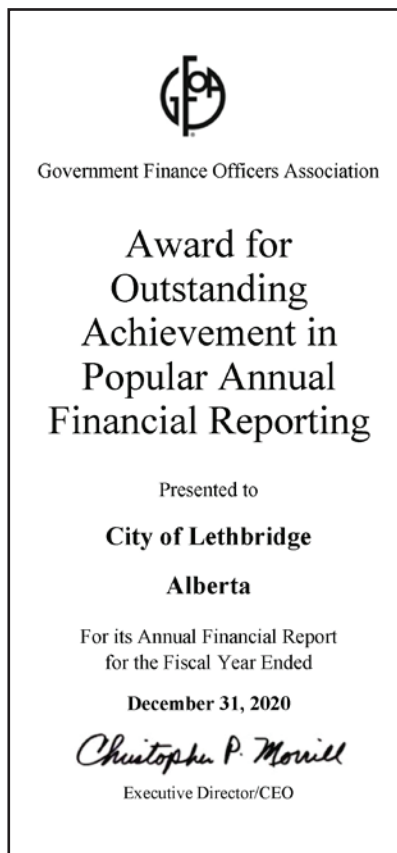
## FINANCIAL RECOGNITION

### Popular Annual Financial Report Award

The Government Finance Officers Association of the United States and Canada (GFOA) has given an Award for Outstanding Achievement in Popular Annual Financial Reporting to the City of Lethbridge for its Popular Annual Financial Report for the fiscal year ended December 31, 2020. The Award for Outstanding Achievement in Popular Annual Financial Reporting is a prestigious national award recognizing conformance with the highest standards for preparation of state and local government popular reports.

In order to receive an Award for Outstanding Achievement in Popular Annual Financial Reporting, a government unit must publish a Popular Annual Financial Report, whose contents conform to program standards of creativity, presentation, understandability and reader appeal.

An Award for Outstanding Achievement in Popular Annual Financial Reporting is valid for a period of one year only. The City of Lethbridge has received a Popular Award for the last six consecutive years (2015-2020). We believe our current report continues to conform to the Popular Annual Financial Reporting requirements, and we are submitting it to GFOA.



### Canadian Award for Financial Reporting

- The City of Lethbridge received a Canadian Award for Financial Reporting for the fiscal year ended December 31, 2021. This award is from the Government Finance Officers Association of the United States and Canada (GFOA).
- 2021 was the twenty-sixth consecutive year the City has received this award.
- In order to be awarded a Canadian Award for Financial Reporting, a government unit must publish an easily readable and efficiently organized annual financial report, whose contents conform to program standards.

### Distinguished Budget Presentation Award (2019-22)

- The Government Finance Officers Association of the United States and Canada (GFOA) presented a Distinguished Budget Presentation Award to the City of Lethbridge for its four year budget beginning January 1, 2019.
- The budget conforms to the program requirements and the award is valid for a period of four years only.



Lethbridge Public Library Bookmobile on 8 Ave (Sheila Enevold)



**CITY OF**  
 **Lethbridge**

[lethbridge.ca](http://lethbridge.ca)