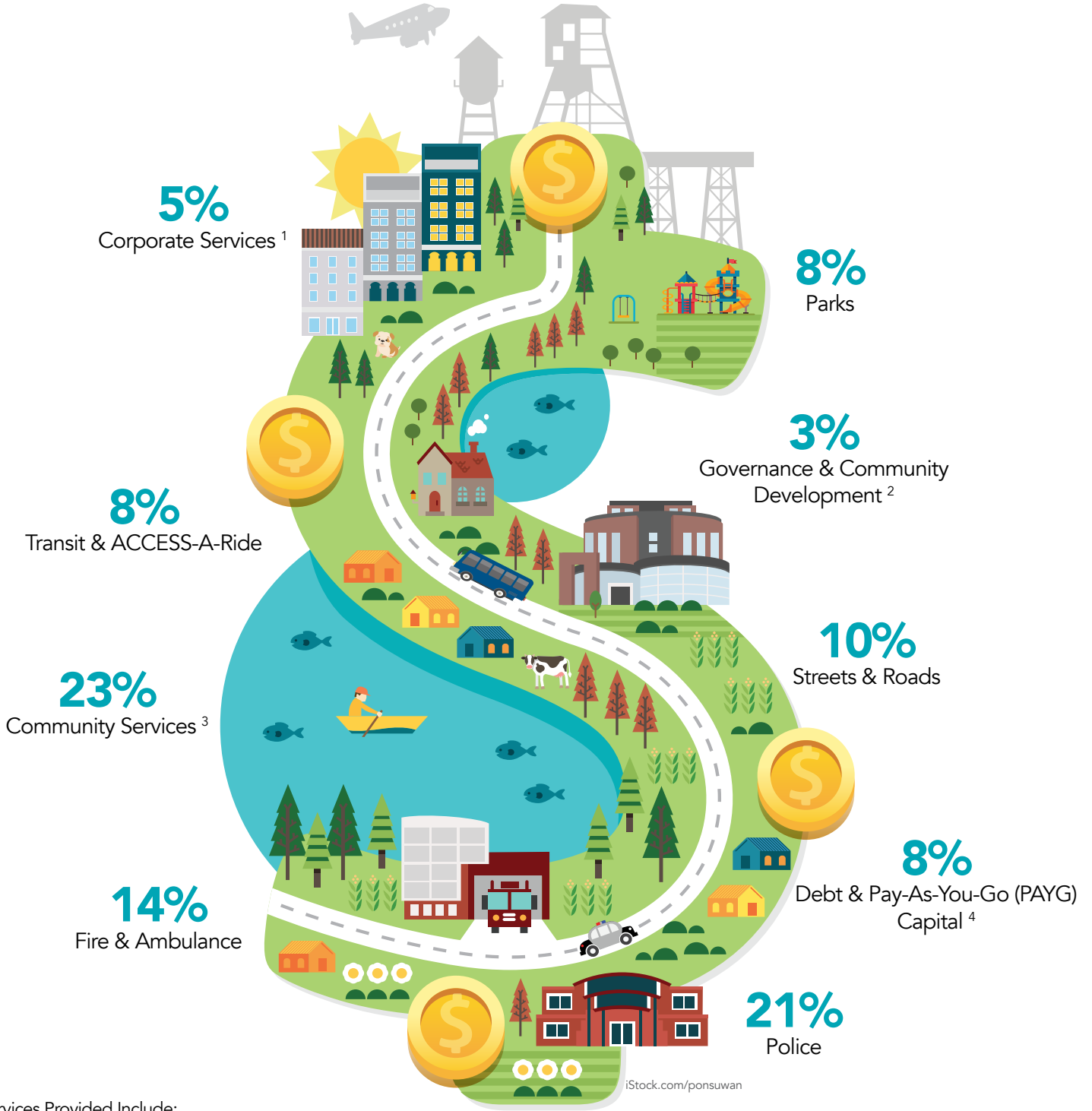


# FINANCIAL HIGHLIGHTS

## WHAT YOUR 2021 MUNICIPAL PORTION OF YOUR TAX DOLLARS WERE USED FOR



Services Provided Include:

1. Information Technology, Financial Services, Human Resources, Assessment & Taxation, Risk Management, etc.
2. City Council, City Manager, City Solicitor, Economic Development, Planning & Development, etc.
3. Recreation & Culture, ENMAX Centre, Regulatory Services, Cemetery Services, Lethbridge Public Library, Galt Museum & Archives, etc.
4. PAYG - costs associated with capital projects that are recurring, relatively small scale or for short lived improvements.