

N.W.1/4 SEC. 27 - 8 - 22 - 4

(C. of T. 111 033 015)  
SOUTH BOUNDARY OF LSD 13 & 14  
NORTH BOUNDARY OF LSD 11 & 12  
(C. of T. 081 426 433 +7)

(C. of T. 111 033 015)  
SOUTH BOUNDARY OF LSD 13 & 14  
NORTH BOUNDARY OF LSD 11 & 12  
(C. of T. 081 426 433 +7)

REGISTRAR  
LAND TITLES OFFICE

PLAN NO. **131 1169**

ENTERED AND REGISTERED  
ON **April 30, 2013**  
INSTRUMENT NO : **131 097 714**  
*Keith Stang*  
A.D. REGISTRAR

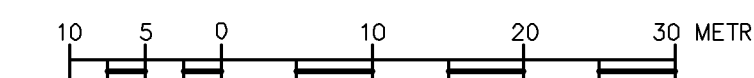
CITY OF LETHBRIDGE  
THE CROSSINGS - PHASE 2

PLAN SHOWING SURVEY OF  
**UTILITY RIGHT-OF-WAYS**

AFFECTING PART OF  
LOTS 45 to 51 incl., BLOCK 5  
LOTS 8 to 23 incl., BLOCK 6  
LOTS 4 to 25 incl., BLOCK 7

ALL ON  
REG'D. PLAN 131 **1168** -  
ALL WITHIN  
N.W.1/4 SEC. 27, TWP. 8, RGE. 22, W. 4 M.

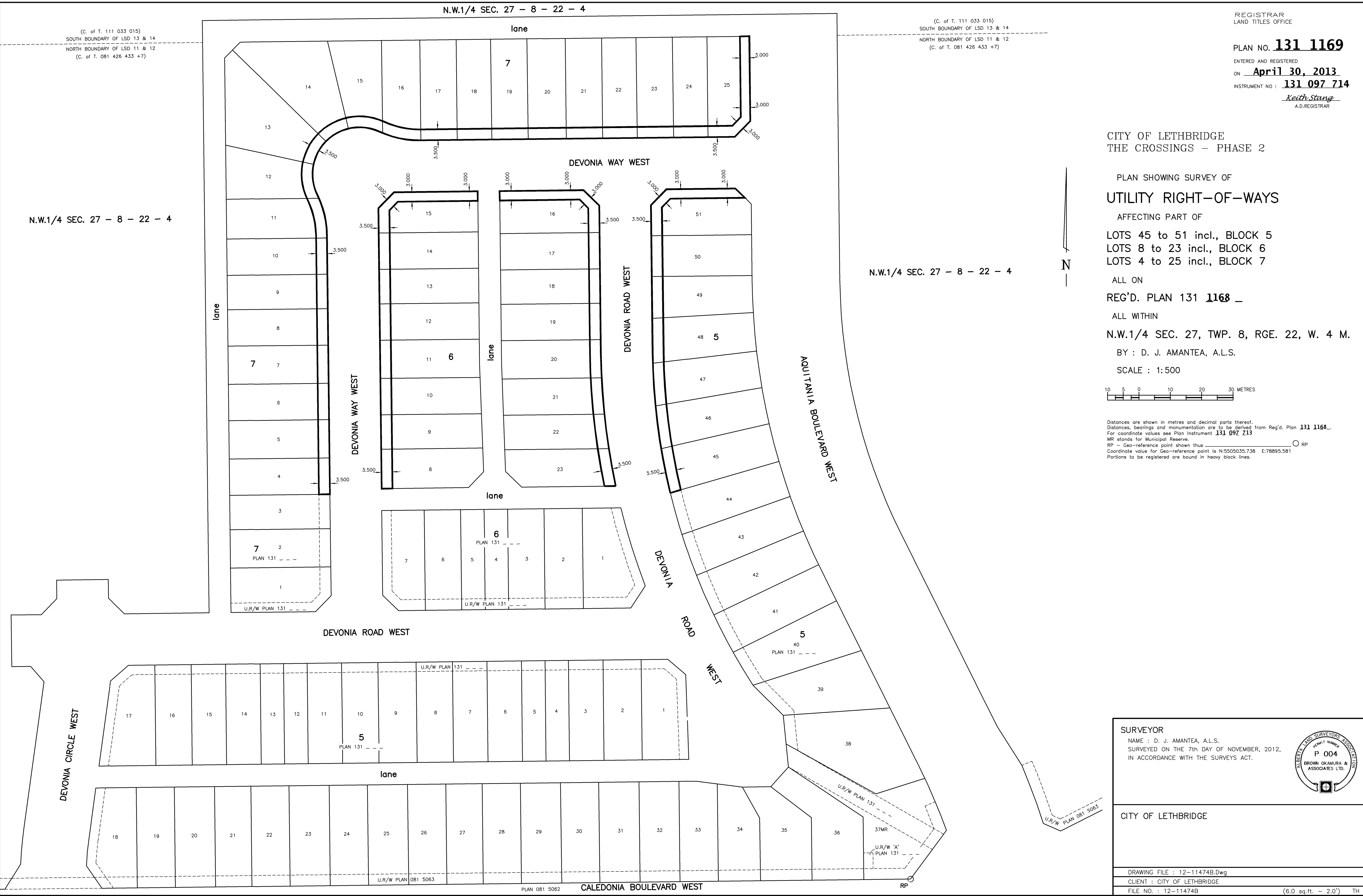
BY : D. J. AMANTEA, A.L.S.  
SCALE : 1:500



Distances are shown in metres and decimal parts thereof.  
Distances, bearings and monumentation are to be derived from Reg'd. Plan **131 1168**.  
For coordinate values see Plan Instrument **131 097 713**  
MR stands for Municipal Reserve.  
RP - Geo-reference point shown thus RP  
Coordinate value for Geo-reference point is N:5505035.738 E:78895.581  
Portions to be registered are bound in heavy black lines.

N.W.1/4 SEC. 27 - 8 - 22 - 4

N.W.1/4 SEC. 27 - 8 - 22 - 4



**SURVEYOR**  
NAME : D. J. AMANTEA, A.L.S.  
SURVEYED ON THE 7th DAY OF NOVEMBER, 2012,  
IN ACCORDANCE WITH THE SURVEYS ACT.

CITY OF LETHBRIDGE

DRAWING FILE : 12-11474B.Dwg  
CLIENT : CITY OF LETHBRIDGE  
FILE NO. : 12-11474B (6.0 sq.ft. - 2.0') TH