

# City of Lethbridge Recreation and Culture Master Plan

Open House Presentation  
February 7<sup>th</sup>, 2013



Recreation and Culture Master Plan

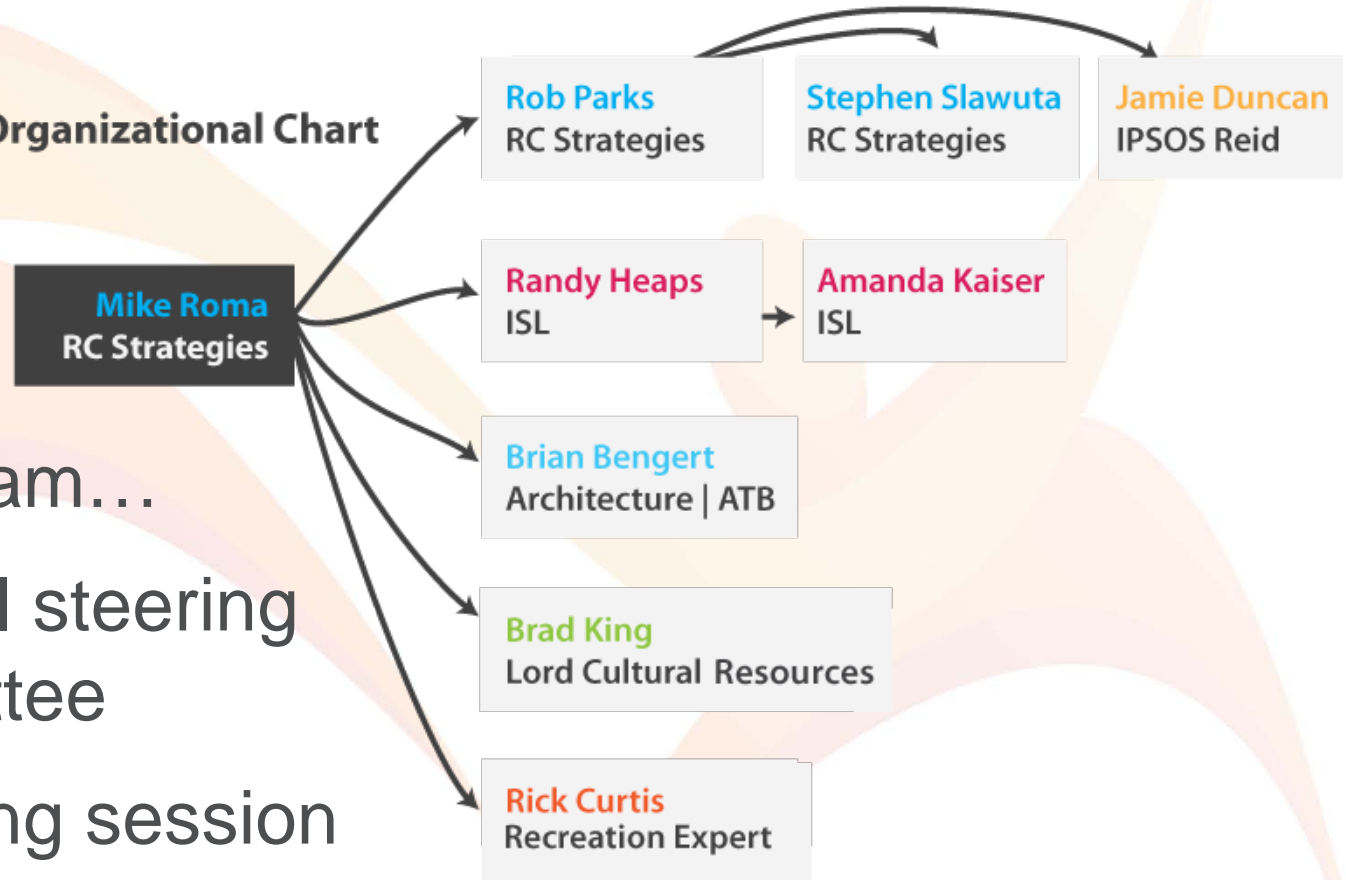
# Presentation Overview

1. Introduction
2. What is a Recreation and Culture Master Plan?
3. How was the Master Plan developed?
4. Recommendations – Service Delivery
5. Recommendations – Infrastructure
  - Facility prioritization model
6. Planning Cycle
7. Conclusion



# Introduction

## Team Organizational Chart



The study team...

- Internal steering committee
- Visioning session participants



CITY OF  
*Lethbridge*



Recreation and Culture Master Plan

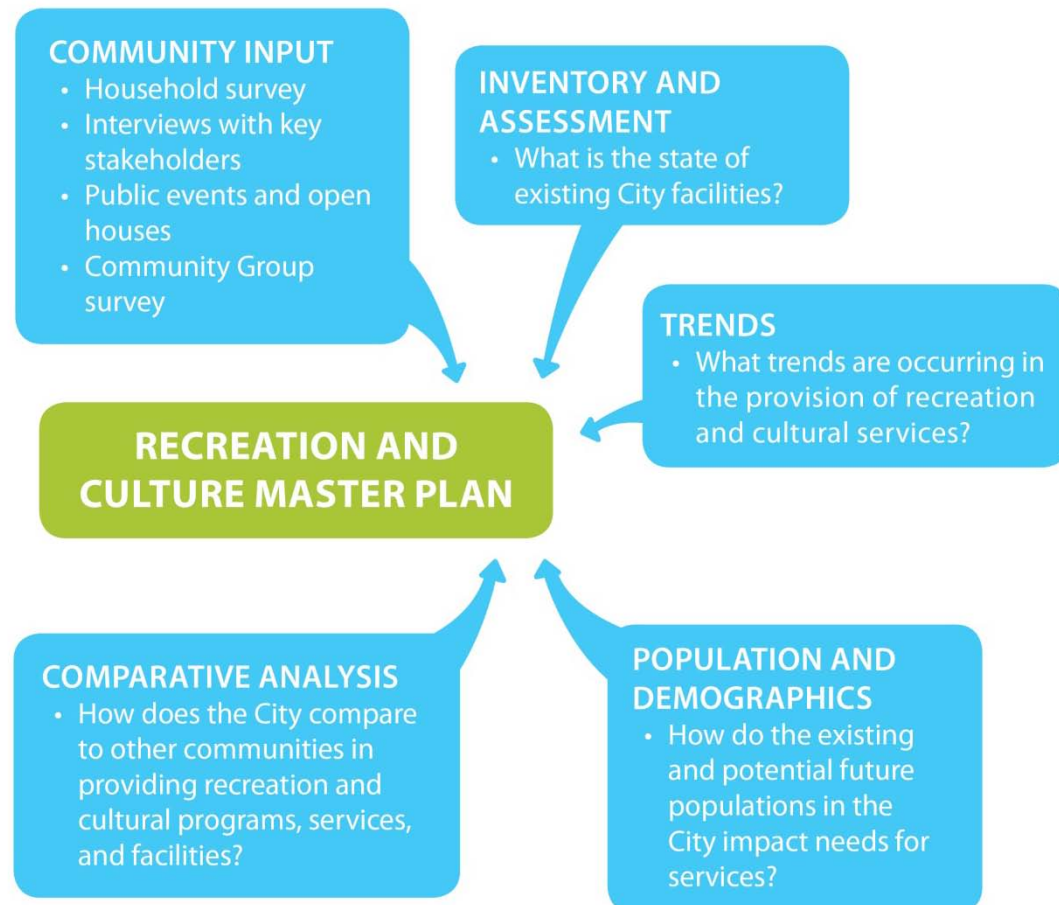
# What is a Recreation and Culture Master Plan?

- The Master Plan:
  - **Guides the City's relationship** with organizations that deliver recreation and culture services
  - **Establishes the City's leadership role** in the provision of recreation and cultural services
  - **Ensures** residents and visitors have **access** to quality recreation and cultural opportunities



# How was the Master Plan developed?

- A comprehensive research program was completed and is presented in a document called **“The State of Recreation and Culture in Lethbridge”**



# A recreation and culture master plan...

There is a variety of proven individual and community **benefits to recreation and culture participation.**



# Master Plan Recommendations

## service delivery

### 1. Enhanced structure by:

- Outlining expectations of all parties
- Treating groups and residents equitably
- Enhancing transparency
- Promoting collaboration between different sectors such as recreation, culture, health, justice, etc.

### 2. Promotions and social marketing

- Focus on recreation and culture opportunities and their benefits to increase participation, support, and awareness



# A recreation and culture master plan... **service delivery**

## **3. Community liaison**

- Set up formal ongoing communication with groups and the public

## **4. Enhance support for partner groups**

- Recognize the different stages of groups (emerging, mature, declining)
- Continue and strengthen the existing City supports
- Coordinate support offered by the City, Allied Arts Council, and the Lethbridge Sport Council to community partner groups
- Provide training to partner groups





# A recreation and culture master plan... **service delivery**

## **5. Continue developing performance measures for partners and with partners**

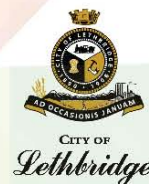
- Outline expectations of all parties

## **6. Work with community organizations (e.g. Volunteer Lethbridge) to enhance volunteer support**

- Connect volunteers with opportunities
- Continue to attract, retain and recognize recreation and culture volunteers

## **7. Collect detailed information about the use of facilities and programs**

- How many people are using community facilities?



# A recreation and culture master plan... **service delivery**

- 8. Involve other stakeholders (e.g. education, justice, health, social) wherever possible to promote, deliver and measure recreational and cultural services**
- 9. Continue to deliver recreation and culture programming through partnerships**
  - Focus on program priority areas identified in the “State of...” report
- 10. Event hosting**
  - Continue to assist groups in attracting and delivering events
  - Create a tourism strategy with other key stakeholders



# A recreation and culture master plan... **infrastructure**

**Things to consider for indoor and outdoor recreation and culture infrastructure include:**

- Stand alone vs. multipurpose facilities
- Reinvestment, repurposing and decommissioning facilities
- Land acquisition, siting and geographic balance
- Infrastructure design



# A recreation and culture master plan... infrastructure

A consistent approach to infrastructure development (over \$1M) should be following:



# A recreation and culture master plan... infrastructure

## Facility prioritization model

- Criteria to prioritize different facility projects
  - Community demand (priorities from “The State of...” report
  - Life span of existing facilities
  - Public accessibility
  - Cost savings through partnerships / grants
  - Economic impact



# A recreation and culture master plan... **infrastructure**

## Facility prioritization model

- Criteria (con't)
  - Conformance with City strategic direction
  - Site ownership
  - Overall capital cost
  - Overall operating cost



# A recreation and culture master plan... infrastructure

## Facility prioritization model – preliminary scoring

Rank	Project	Score
1	New fitness areas in existing facilities (expansion)	73
1	New leisure and program (diving) aquatics and fitness centre	73
2	Henderson Outdoor Pool renovation	67
3	New indoor field/multipurpose gymnasium facility with indoor track	64
3	New ice arena (adding an 8th community ice sheet)	64
3	Replacing Civic Ice Centre	64
3	Replacing Labor Club Ice Centre	64
3	New outdoor festival space	64
4	Yates Memorial Theatre and Sterndale Bennett renovation	62
5	New water spray park	61
6	New performing arts centre	60
7	New skateboard park (minor)	57
7	New sports field (high quality)	57
7	New North Lethbridge Sports Park change room facility (sports field support)	59
8	New skateboard park (major)	56
9	New picnic area	55
10	New gallery spaces in existing facilities (expansion)	53
11	Fort Whoop Up reinvestment	53
11	Nikka Yuko Japanese Garden reinvestment	53
12	Bill Kergan Centre renovation	48
13	Replacing Fritz Sick Centre Swimming Pool	46
14	Shooting range relocation	40

# A recreation and culture master plan... infrastructure initiatives

## Short-term priorities:

1. Developing a new multipurpose leisure centre including leisure aquatics, fitness and dry-land/field house/gymnasium spaces
2. Henderson outdoor pool renovation
3. Adding new fitness spaces to existing recreation facilities
4. Developing a new outdoor festival space





# A recreation and culture master plan... infrastructure initiatives

## Mid-term priorities:

5. Yates Memorial/Sterndale Bennett reinvestment
6. Bill Kergan Centre renovation
7. Civic Ice Centre replacement/reinvestment
8. Labor Club Ice Centre replacement/reinvestment
9. Developing an additional ice sheet (increasing the overall provision to 8 community ice sheets in the City)
10. Developing a new performing arts centre
11. Developing a new water spray park
12. Developing new skateboard parks (minor and major)
13. Developing new sports fields and associated amenities



# A recreation and culture master plan... infrastructure initiatives

## Long-term priorities:

14. Fort Whoop Up reinvestment
15. Nikka Yuko Japanese Garden reinvestment
16. Fritz Sick Centre Swimming pool replacement/reinvestment
17. Developing a new picnic shelter area
18. Adding gallery spaces to existing recreation and culture facilities



# A recreation and culture master plan... implementation

## 10 YEAR PLANNING CYCLE



Recreation and Culture Master Plan

# Conclusion

- Thank you:
  - Residents of Lethbridge
  - Community groups
  - Delivery partners
  - Project Steering Committee
  - The City of Lethbridge
- Information is available on panels, handout, on City's website ([www.lethbridge.ca/things-to-do](http://www.lethbridge.ca/things-to-do))
- Complete feedback form

