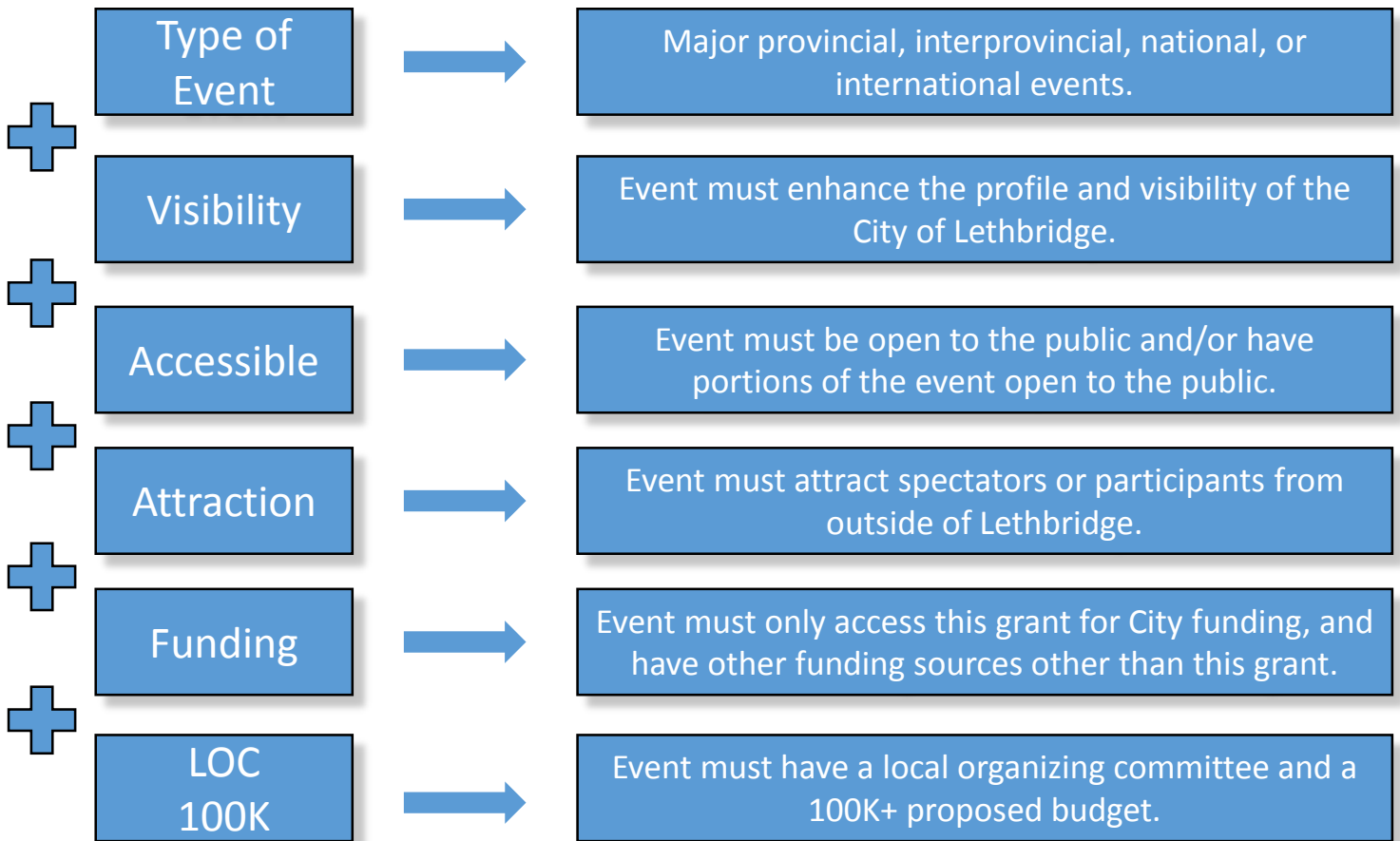


MAJOR EVENT GRANT (MEG)

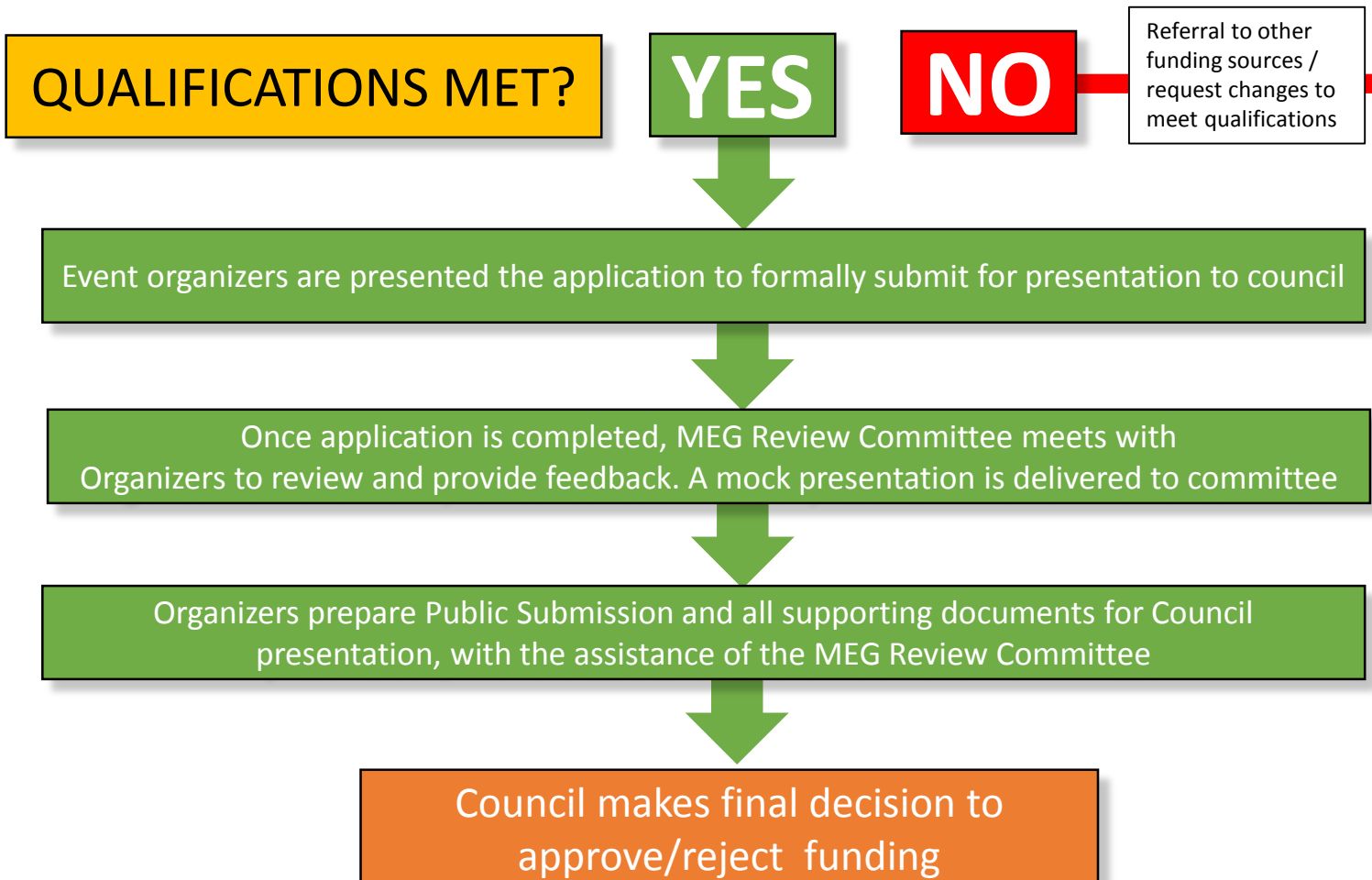


Discovery Process – *Initial contact and conversation will be made between stakeholders via City Recreation & Culture staff.*

QUALIFICATIONS



MEG Review Committee meets with interested party to review and confirm the Event is eligible for MEG funding



Policy Statement

It is the policy of the City of Lethbridge to enhance the profile and visibility of Lethbridge, thereby contributing to the quality of life, by assisting with funding and in-kind services support to host major provincial, interprovincial, national and international events.