

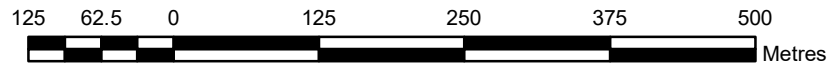
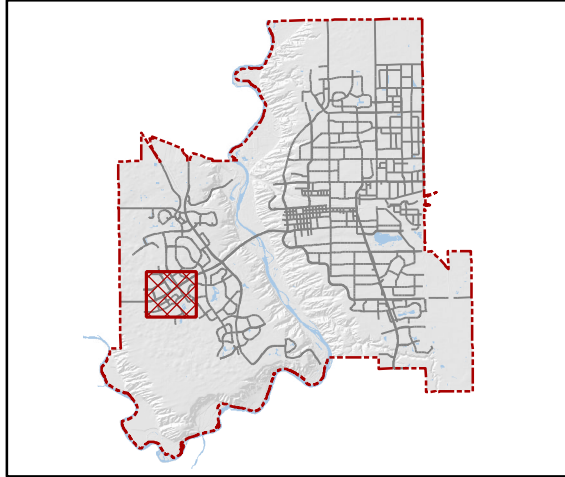


# CITY OF Lethbridge

## COPPERWOOD

### ~ NEIGHBOURHOOD MAP SERIES ~

#### Location Map



#### Legend

Cemetery	Bridges
Golf Course	Railway
Hospital	City Boundary
Recycling Station	Lake or River
	Parcel Boundary
<b>Aquatic Facilities</b>	<b>Recreational Facilities</b>
Indoor Pool	Ball Diamond
Outdoor Pool	Football Field
<b>Educational Facilities</b>	Ice Centre
Holy Spirit Catholic School Division	Rugby Pitch
Lethbridge School District No. 51	Soccer Pitch
Other	<b>Greenspace</b>
<b>Emergency Services</b>	Park
Lethbridge Fire Department	River Valley Parkland
Lethbridge Regional Police Service	School Grounds
RCMP Lethbridge Detachment	

#### Notes

Neighbourhood maps do not correspond to or identify neighbourhoods that are governed by Neighbourhood Redevelopment Plans, Area Structure Plans, Outline Plans, or Comprehensive Plans. To learn more about plans that might be in effect for your neighbourhood, please see Major Plans & Maps in the Doing Business, Planning and Development of Property section.

This map is illustrative only. The City of Lethbridge offers this information in good faith, but makes no warranty or representation, expressed or implied, with regard to the correctness, accuracy and/or reliability of this data.

Source of Information: City of Lethbridge Geographical Information System Data - compiled from field survey data and historical records.

All rights reserved. No part of this map may be reproduced in any form or by any means without the written consent from the City of Lethbridge.

©2018, City of Lethbridge, AB Canada

Published September, 2018

