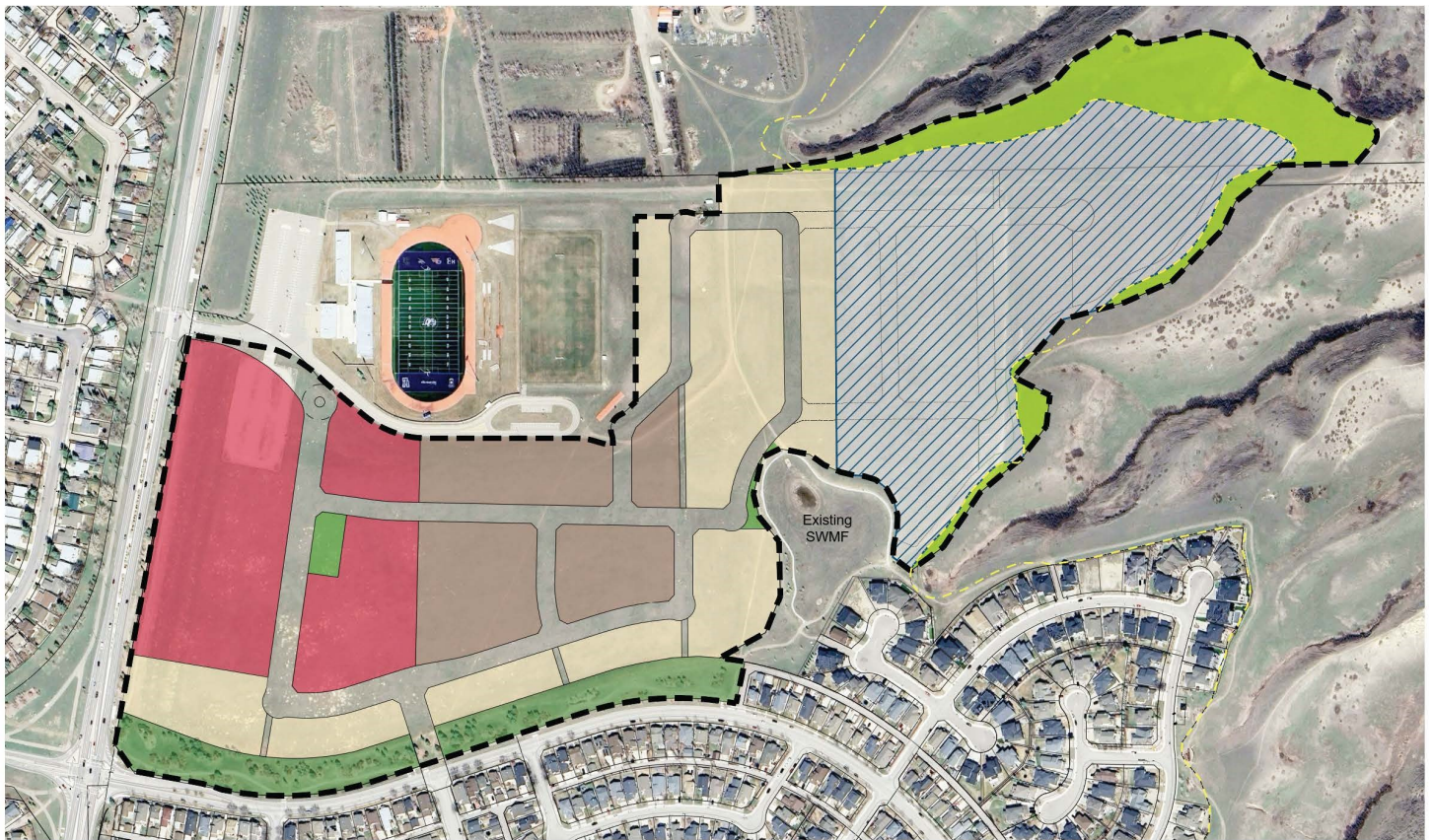


University of Lethbridge South Outline Plan

Part of S ½ Sec. 25-08-22-4 and Part of N ½ 24-08-22-4

Proposed Outline Plan



Legend

- Commercial Mixed Use
- High/Medium Density Residential
- Medium/Low Density Residential
- Park/Open Space
- Coulee Embankment
- Special Study Area
- Coulee Setback Line
- Plan Boundary

SOUTH CAMPUS LETHBRIDGE
Land Use Concept Plan

Assets and Infrastructure Standing Policy Committee will be considering the lands within the University of Lethbridge South Outline Plan owned by the University of Lethbridge. The purpose of an outline plan is to provide detailed planning and engineering framework to facilitate the phased subdivision and development of a new neighbourhood. The University of Lethbridge South Outline Plan envisions a variety of residential development densities and commercial mixed-use sites along with pockets of park space. A portion of the plan is designated as a Special Study Area, as further study will be required in order to develop this area. This amendment is consistent with the policies of the South Saskatchewan Regional Plan and the City of Lethbridge Municipal Development Plan.



Questions Regarding the Amendment?

Contact: Janet Gutsell, Senior Subdivision Planner
403-320-3091 or janet.gutsell@lethbridge.ca

Relevant Planning Documents

- [South Saskatchewan Regional Plan](#)
- [Municipal Development Plan](#)