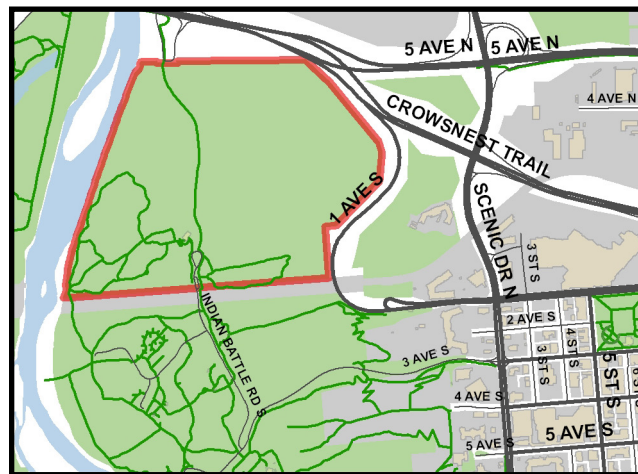


LETHBRIDGE NATURE RESERVE

South Side



CITY OF
Lethbridge



regular programs with a volunteer guide.

The Lethbridge River Valley is one of only a few places in the world where three species of Cottonwood trees are found.

This park is ideal for the exercise and nature enthusiasts, photography, or those simply looking to escape the city.

The Lethbridge Nature Reserve, located north of Indian Battle Park, features the Helen Schuler Nature Centre. The Nature Centre has been offering environmental education programming since 1982.

There are self guided walking trails which highlight the unique features of the park, or you can attend one of the

There are a few rules associated with a designated nature reserve:

- Bikes or dogs are not allowed
- Picking or removing vegetation is not allowed
- Fires and camping are not permitted.