

# Yates Theatre

## Venue Technical Specifications



# Genevieve E. Yates Memorial Centre

Information Updated: March 15, 2023

## Location

1002 – 4 Avenue South  
Lethbridge, Alberta  
Canada, T1J 0P5

## Contact

Main Phone: 403-393-6131  
Tickets: 403-329-7328 (SEAT)  
[www.enmaxcentre.ca](http://www.enmaxcentre.ca)

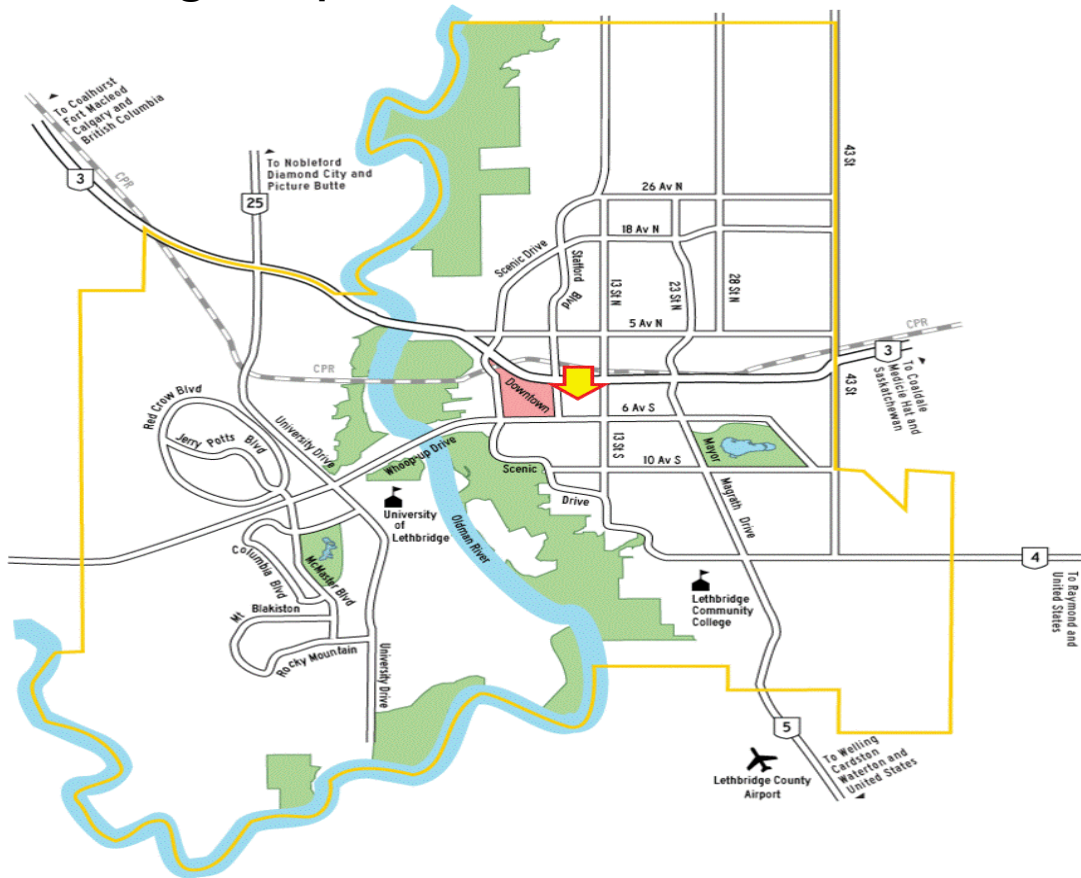


## Table of Contents

Lethbridge Map	4
Parking	4
Seating Capacity	5
Stage Dimensions	5
Loading Facilities	6
Power	7
Projector	7
Audio	8-9
Lighting	10-11
Stage	12
Pianos	13
Dressing Rooms	13
Green Room / Rehearsal Room	14
Costume / Workshop	15
Ticket Centre / Mezzanine / Concession	16



## Lethbridge Map



## Public Parking

### Monday – Friday (9 am to 5 pm)

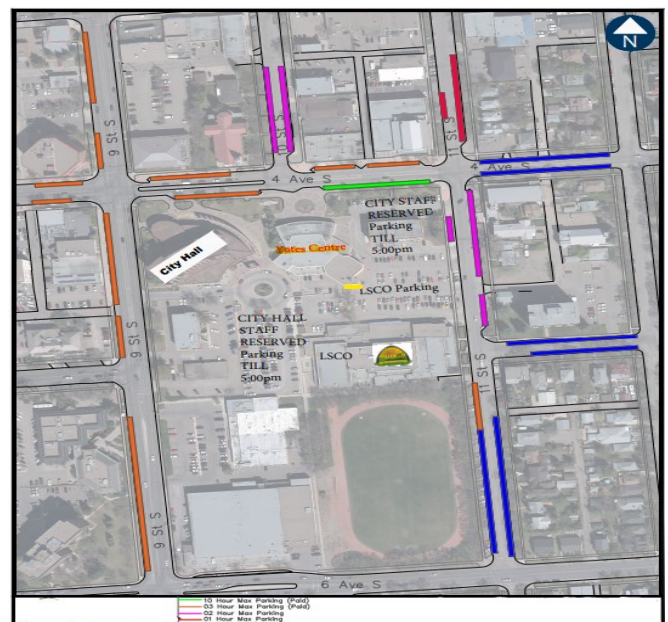
2-hour free parking available in the LSCO lot.

Paid time parking on streets.

### Evenings (After 5) and weekends

Free Parking everywhere.

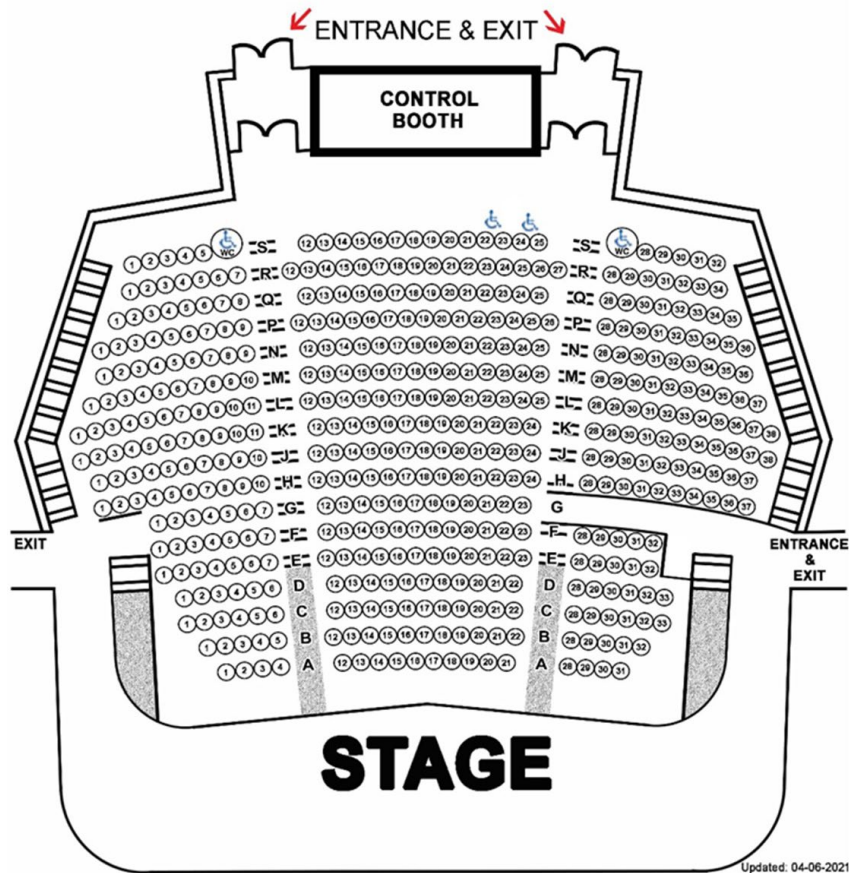
There are three dedicated Yates client parking stalls available. Please contact 403-393-6131 to arrange access.



# Auditorium

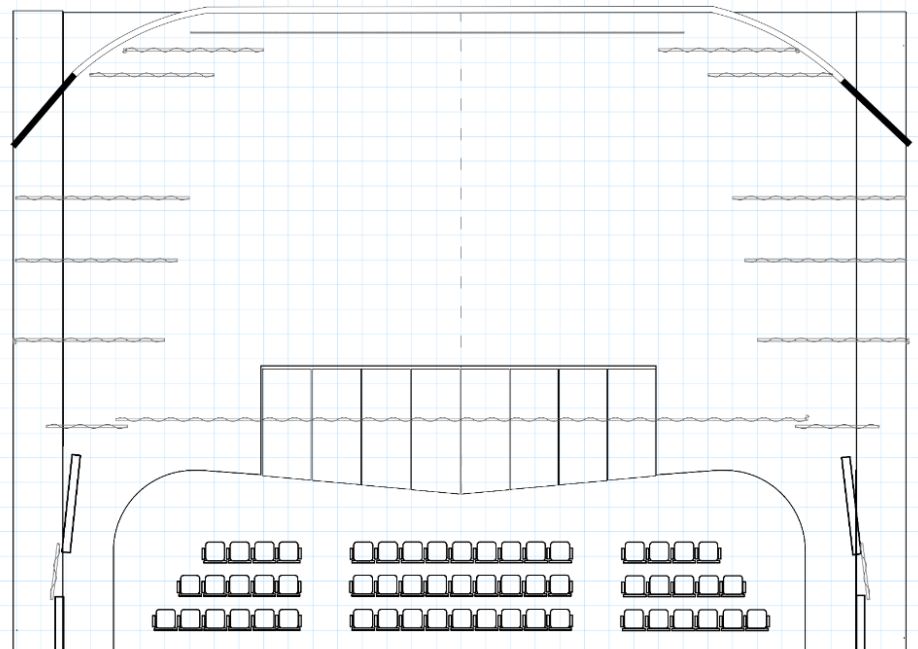
Seating Capacity: 470 and 4 Wheelchair

## Yates Theatre



YATES MEMORIAL CENTRE - STAGE PLOT

scale 1/8"=1' 2" squares



## Stage Dimensions

<b>Proscenium Width:</b>	Max - 50' (15.2 m)
	Min - 26' (8 m)
<b>Stage Depth:</b>	38' (11.6 m)
<b>Border Height:</b>	16' (4.9 m)
<b>Proscenium Height:</b>	17' (5.2 m)
<b>Wing Space:</b>	33'x24' (10 m x 7.3 m)



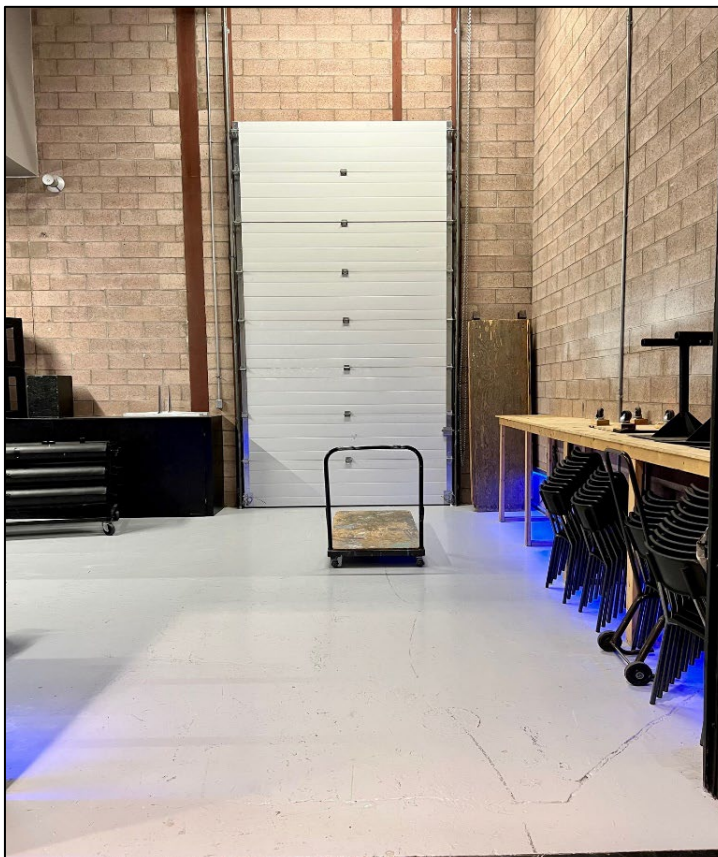
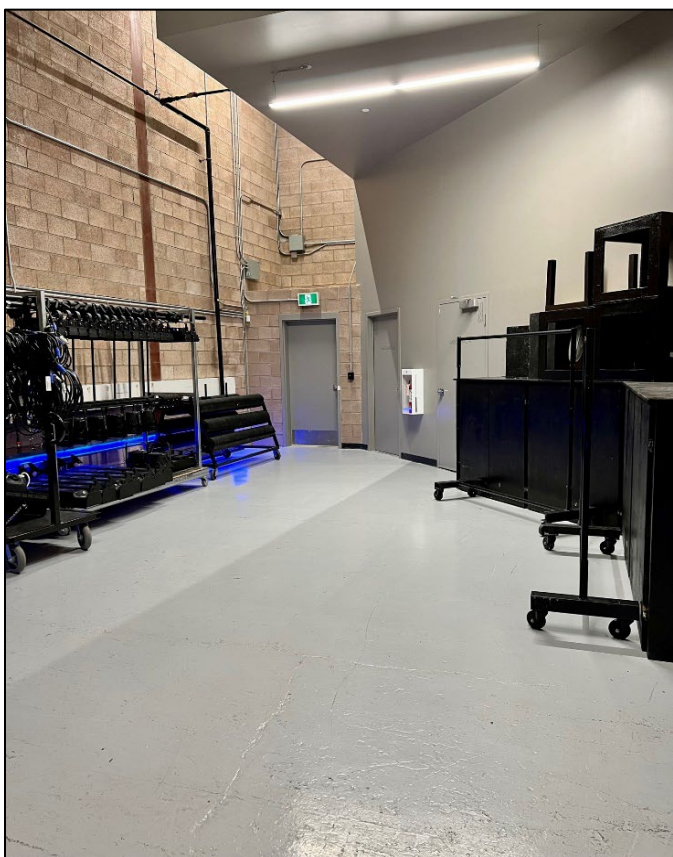
## Loading Facilities

Loading bay is on the west side of the building. Access is off Stafford Dr. S. behind City Hall. If parking a truck or bus over 35 feet in length, please call 403-315-9405 at least two weeks ahead of your event as the traffic circle will need to be blocked off.

### Dimensions

Door clearance: 16' high x 8' wide  
Height from ground: 35"  
Push to Stage Left Wing: 20'  
Dock is at stage level.

**Please ensure that vehicles are turned off when loading doors are open.**



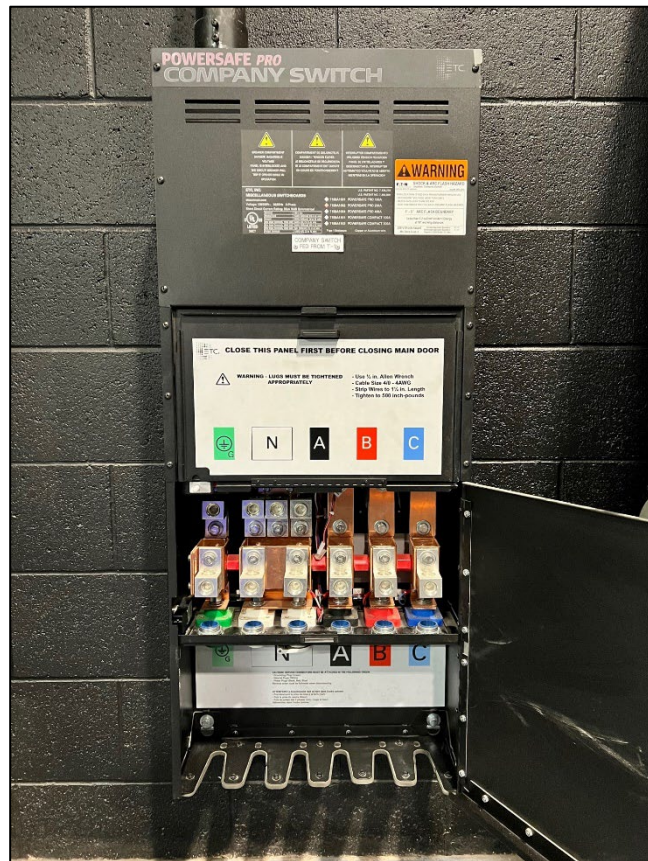
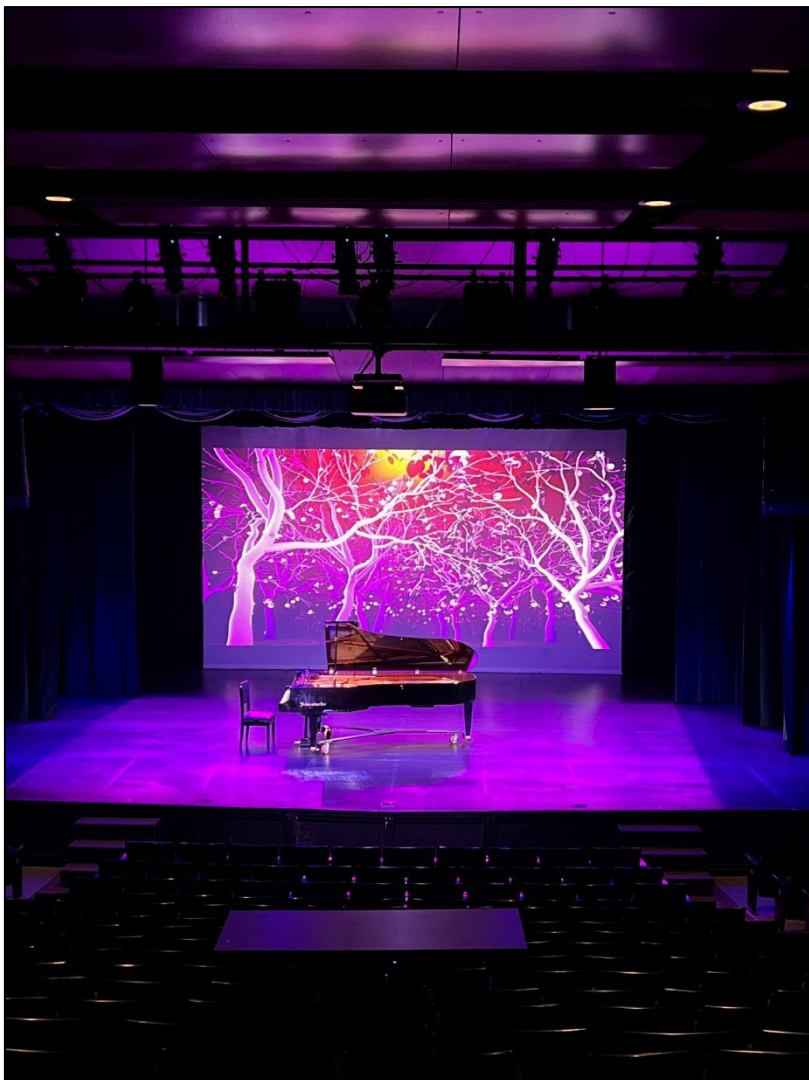


## Power

A 200-amp three phase power connection is available Stage Left. It can accommodate camlocks or bare wire. Bare wire connections will require an electrician to be hired at user cost.

There is no shore (bus) power.

Please ensure your coach has adequate fuel for generator.



## Projector

### Panasonic PT-RZ970:

10,000 Lumens

Underhung from FOH Catwalk.

### Surfaces:

#### Projection Screen (retractable)

16'(4.8m) wide X 13'(4m) high

Located 14'(4.4m) from front of stage.

#### Cyclorama

32'(9.7m) wide X 18'9"(5.5m)

Located 39'(11.9m) from front of stage.

### Playback:

Macbook Pro with QLab 4 full video license.

Video ports in all input/return locations.

## Audio

### Microphones:

- 8 - Shure ULXD2 Wireless SM58
- 8 - Shure ULDX1 Wireless Beltpacks  
w/ Countryman Headsets
- 8 - Shure SM58 Vocal
- 10 -AKG C1000s Condensor
- 5 - Beta 58A
- 4 - Shure SM-81-LC
- 1 - Shure Beta 52A
- 6 - Crown PCC-160
- 4 - Shure Beta 98 AD/C Drum
- 1 - Shure Beta 98 A/C Instrument
- 1 – Shure Beta 98 H/C Instrument
- 10 -Shure Beta 57 Instrument
- 5 - Sennheiser E-604 Drum
- 4 - Sennheiser MD421-11

### Mic Stands:

- 9 - Ultra Mic Stands w/ Booms (Round Base)
  - 10 -K&M Tripod Mic Stands w/ Booms
  - 6 - K&M Tripod short Mic Stands w/ Booms
  - 10 - Apex Desktop Mic Holders
- Assorted Clips and Cables

### Playback:

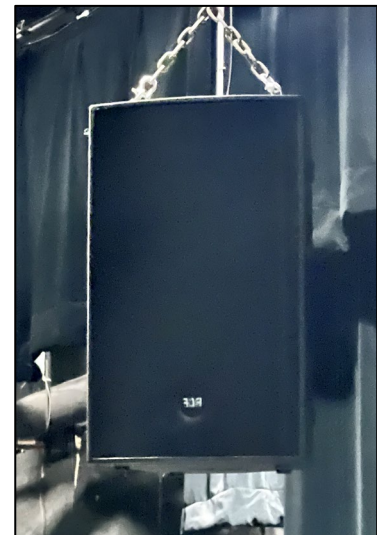
Macbook Pro w/ QLab 4 (full audio and video license) available. Technician can build a simple session on event day, or more complicated sessions in advance if files are sent prior to event and required time is booked by the user. CD and tape players are available upon request.

### Control Console:

- 1 - Yamaha CL1 –Located in control booth
- 1 – Yamaha CL5 –Located at house mix position

### Inputs/Outputs:

- 1- 3224 Yamaha RIO in/out digital stage box
- 3- 1608 Yamaha RIO in/out digital stage box
- 2- 25' 12 inputs 4 returns sub snakes
- 2- 50' 12 inputs 4 returns 50' digital sub snake



### Speakers:

- 10-RCF HDL20-A Line Array (5 per side)
- Side Fill: 2-RCF 4PRO 3031-A (1 per side)
- Front Fill: 2-Renkus-Heinz PN61 (not installed)
- Subwoofers – 2 - RCF Sub 8006-AS
- Monitors – 12 - RCF NX-12 – SMA Active Stage Monitors

### DI Boxes:

- 3 - Radial Pro DI Passive
- 2 - Radial JDI Passive
- 4 - Radial J48 Active
- 4 - Radial Trim II w/ volume control



## House Mix Position

The house mix position is located at the back of the auditorium behind row S.



### Road Systems

The Yates Theatre audio system is run on a Dante Network. Outside systems can be integrated with the Yates Theatre sound system. Analog is available if required. Shielded Cat 6 running from mix position to any input/return location is available.



### Input/Returns Locations

- Stage Left
- Stage Right
- Up Stage Right
- Orchestra Pit
- House Mix Position
- Catwalk FOH
- Tech Booth

### Program Sound

Program sound can be sent to backstage hall, dressing rooms, loading dock and Green Room from the mixing console or from dedicated microphones. Audio and video can be sent to the Sterndale Bennett Theatre. Live video can be sent to the Green Room.

### Clearcom

The Yates Theatre has six wireless headsets with two channels (A or B). Wired headsets can be connected in the following locations: Stage Left, Stage Right, Booth, Pit and Back of House.

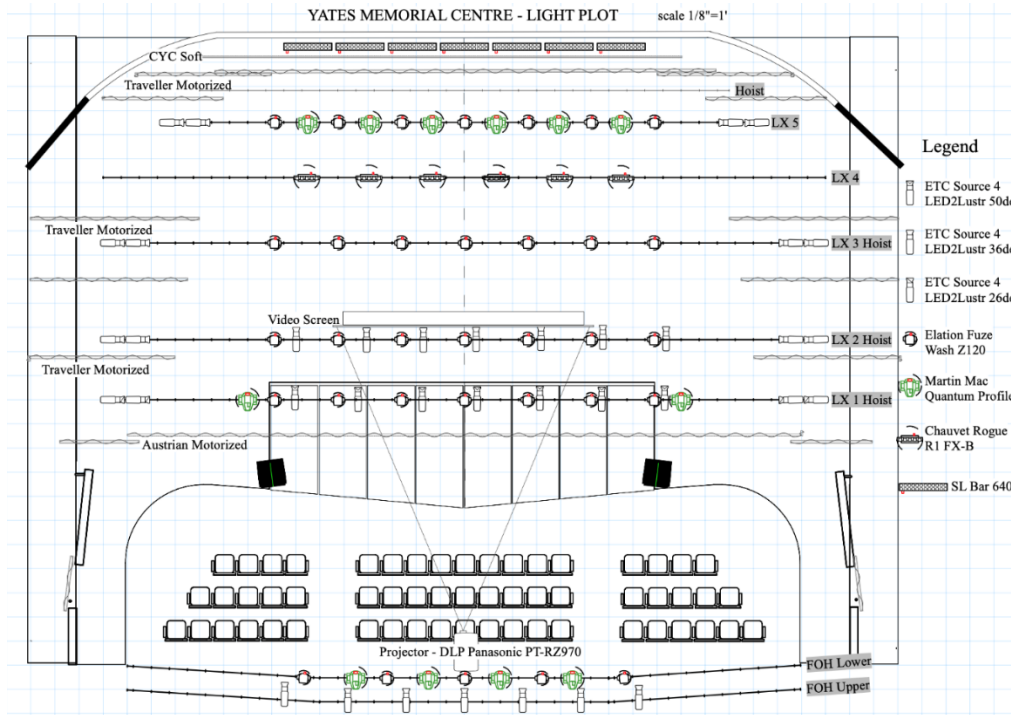
**Future Project:** Streaming Services are currently being sourced.

## Lighting

## House Hang

House hang fixtures can be re-focused but must be restored to house hang positions before end of rental.

0'—2'—4'—6' blue grid squares are 2' (.7 m)



## Circuits

FOH – 14 @ 20 A

SR Wing – 2 @ 20 A

SL Wing – 2 @ 20 A

1<sup>st</sup> OH LX-14 @ 20 A

2<sup>nd</sup> OH LX-14 @ 20 A

3<sup>rd</sup> OH LX-14 @ 20 A

4<sup>th</sup> OH LX-14 @ 20 A

5<sup>th</sup> OH LX-14 @ 20 A

Up SR wall-4 @ 20 A

Up SL wall -4 @ 20 A

## Control and Dimming

### Lighting Console - ETC Ion XE

Stage lighting is 100% LED with 30 portable ETC 750W dimming packs available for incandescent fixtures.

Network uses sACN protocol and ETC Net3 Gateways for DMX I/O.

House and Work Lights are run via ETC Touch Screen and are also patched in Console.

Building exterior architectural lighting can be programmed upon request.



## Lighting Inventory



- 58 – ETC Lustr 2 bodies and accessories -  
w/ (20) 26, (40) 36 and (17) 50 degree lenses
- 39 – Elation Fuze Wash z120
- 27 – ETC ColorSource Linear 1
- 11 – ETC D22 Lustr Desire
- 14 – Martin Mac Quantum Profile
- 12 – Chauvet Colorado 2 Quad Zoom Tour
- 10 – Chauvet Rogue R1 FX-B
- 14 – Showline SL Bar 640 LED
- 2 – Follow Spots – LDR Canto 700 msd/msr
- 2 – Ultratech Radiance Hazers

### ETC Prodigy Motorized Pipes

There are 4 prodigy pipes above the stage.

Total Live Load 1900 Lbs. each.

**1<sup>st</sup> LX** – 8'(2.4m) from front of stage. 18'(5.5m) trim  
Current load is around 1300 Lbs.

**2<sup>nd</sup> LX** – 12'(3.7m) from front of stage. 18'(5.5m) trim  
Current load is around 1100 Lbs.

**3<sup>rd</sup> LX** – 20'(6.1m) from front of stage. 18'(5.5m) trim  
Current Load is around 1000 Lbs.

**4<sup>th</sup> Pipe** -28'(8.5m) from front of stage. 20'(6.1m) trim

This pipe is reserved for hanging back drops, set pieces, etc. Note that this pipe is downstage of 4<sup>th</sup> LX and will obscure the Quantum back line.



## Stage

### Stage Floor

- Painted tempered Masonite over wood
- The floor may be painted provided it is restored to the building specified black by the user by the end of rental period at the user's cost
- Fastening is permitted; no brad nails or staples

**Dance Floor** - (6) rolls Rosco Adagio 44' X 63"

**Traps** – None

### Stage Draperies

- Main Curtain - Silver Austrian - 32'2" (9.8m) from cyc
- Blue Legs - Manual (to define Proscenium) - 31'6" (9.6m) from cyc
- Downstage Traveller - Motorized Split Travel - 25' from cyc
- Midstage Traveller #1 - Manual Split Travel - 18' (5.5m) from cyc
- Midstage Traveller #2 - Motorized Split Travel - 11' (3.3m) from cyc
- Upstage Traveller - Motorized Split Travel - 1' (0.3m) from cyc
- Cyclorama - Soft Cyc - 32' (9.7m) wide X 18' high

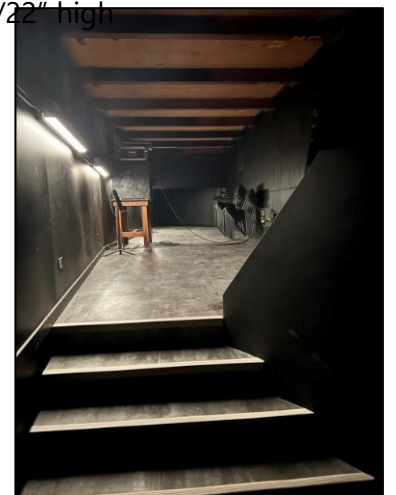
### Stage Equipment and Furnishing

- Tables (Black Polymer) - (12) - 8' (6) - 6' (4) - 2' 6"
- Chairs (Black hard) - (48) (Black Cloth) - (100)
- Music Stands - (20)
- Risers (Wenger Platform 4' x 8') - (8) - 16/24" high (8) - 8" high
- (Bil Jac Platform w/ railings) - (12) - 4' x 8' - (4) round corners 6"/10"/16"/22" high
- (Choral 3 Step) - 4

### Orchestra Pit

- 32' (9.7m) wide SR to SL
- 9' (2.8m) long Down to Upstage
- Depth 7'8" (2.3m) from stage level
- 2'8" (.85m) from audience level

At least one month's notice is required for the removal of the pit and will incur additional user costs





## Pianos

Bosendorfer Concert Grand - 9'

Yamaha Concert Grand – 8' 6"

Yamaha Upright Model P22 SE

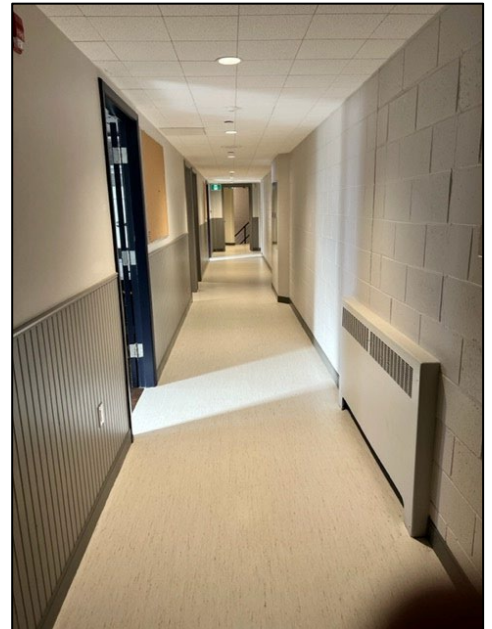
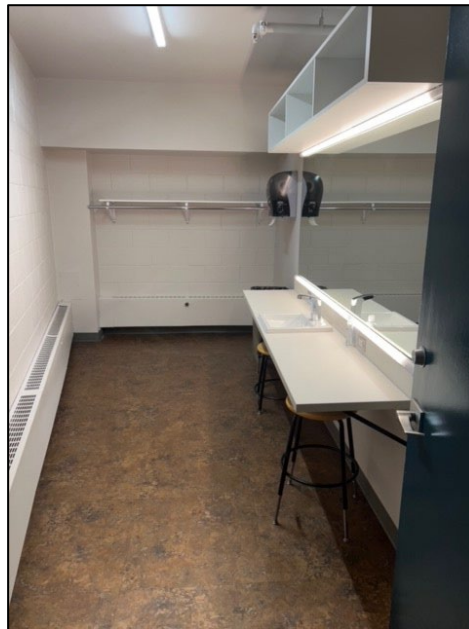
Yamaha Upright Model P22 SE

Yamaha Upright Model U1 (Green Room)

Yamaha Digital Model P125B



## Dressing Rooms

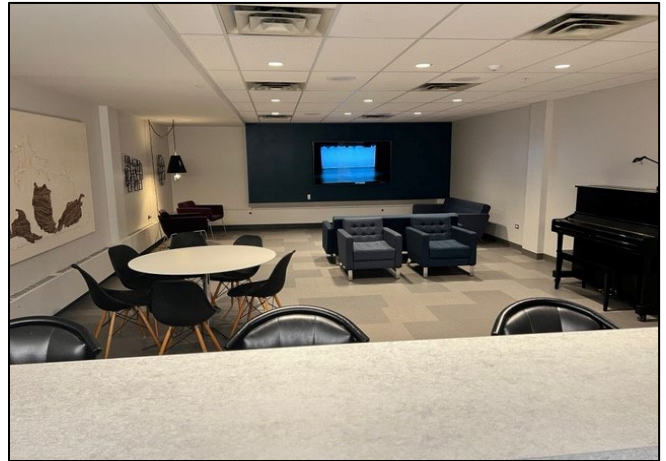


There are four dressing rooms in the backstage cross-over hallway:

- Two large each with a wardrobe and attached two-stall washroom with sink and stall shower. Fits approximately 12 people.
- One small with sink. Fits approximately 4 people.
- One small without a sink or mirror. Fits approximately 2 people.

Extra room is available in the downstairs hallway and rehearsal room for over flow.

## Green Room



The Green Room is located downstairs from the backstage hallway and is accessible via stairs and a wheelchair elevator. It has a fridge, sink, microwave, piano and a 70" television with a live video feed of the stage.

## Rehearsal Studio

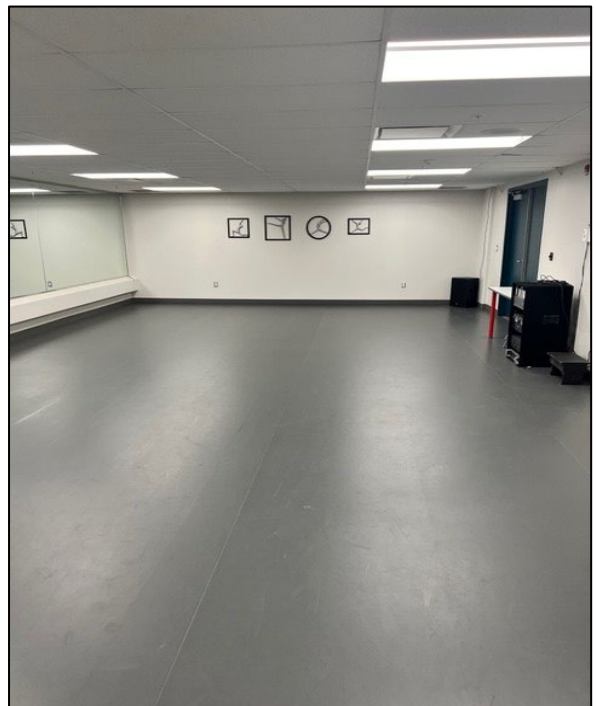
**Rehearsal Studio** = 38'(11.5m) x 22' (6.7m)

Is located downstairs and has a sprung dance floor, full length mirrors and a sound system.

Ceiling height is 7.5' (2.3 m.)

## Props Room

The **Props Room** is located downstairs and has a large collection of hand props and set pieces available for use. Please return items to their original location and in good condition after use.





## Costume

The **Sewing Room** = 16' (4.9m) X 12' (3.7m)  
Is located downstairs and contains sewing table, three-sided full length mirror, steamer, iron, ironing board and assorted sewing accessories.



The **Laundry Room** has an Electrolux LuxCare washer, dryer, and a floor sink. High efficiency laundry soap must be used and is not provided.



## Workshop

A large workshop is in the basement of the Sterndale Bennett Theatre. A cargo elevator is used to move sets and materials to the Yates stage via the SR wing. Cargo elevator dimensions are 15' 6" (4.8m) long and 5' 5" (1.7m) deep. Inside clearance is 13' (4m). A waiver must be signed to use the workshop.

### The Workshop contains the following equipment:

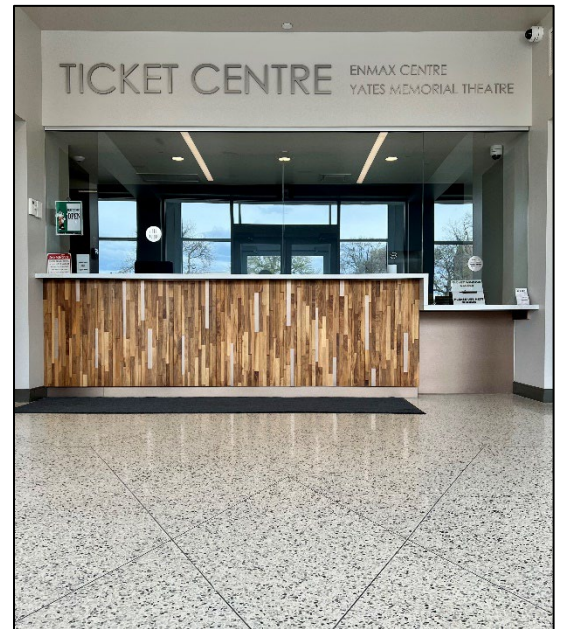
- 1-Sawstop 10" Table Saw
- 1-DeWalt DW708 12" Sliding Mitre saw
- 1-Mastercraft 9" Bandsaw
- 1-Shop Craft 6" heavy duty bench grinder



## Ticket Centre: Located in lower lobby.

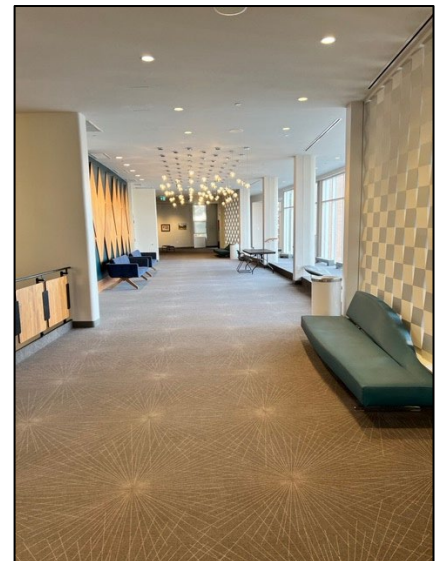
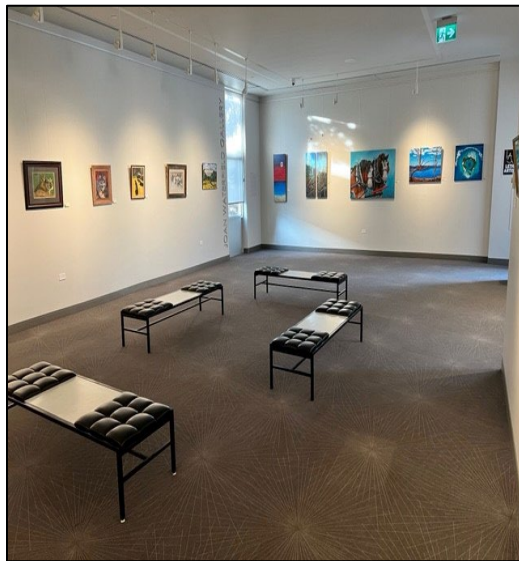
The ENMAX Ticket Centre is the ticketing provider for most events at the Yates Memorial Centre.

- For ticketing services call – 403-320-4225
- To purchase tickets call – 403-329-7328 (SEAT) or [www.enmaxcentre.ca](http://www.enmaxcentre.ca).
- Open Monday – Friday 10 AM to 5 PM.
- Extended hours on event days.



## Mezzanine

Main entrance doors to Yates Theatre. Elevator accessible.



## Concession

The ENMAX Centre is the service provider for the Yates Concession. Questions or special requests can be directed to [caren.christianson@lethbridge.ca](mailto:caren.christianson@lethbridge.ca) or 403-320-3103.

