

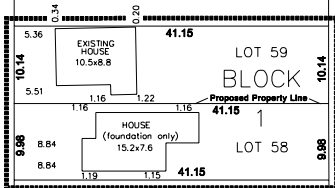
SIXTH STREET NORTH

BLOCK 1

12

PLAN NO. 5212 G.P.

11



9

8

lane

47

BLOCK 1

48

49

PLAN NO. 5212 G.P.

50

51

52

53

54

SEVENTH STREET NORTH



Area to be approved is outlined thus _____ and contains approximately 3.063 ha. Distances are in metres and decimal parts thereof. Distances and areas are approximate and are subject to change upon final survey.

NO.	REVISION	DATE	BY

bcg brown charnau & associates ltd.
 professional engineers
 www.bcg.ca

GARNETT SMITH & FRANK WOLEVER

TENTATIVE PLAN SHOWING SUBDIVISION OF LOT 10, BLOCK 1, PLAN 4372 G.P. IN PART OF S.W. 1/4 SEC. 7, TWP. 15, RGE. 21, W 4 M. City of Lethbridge

APPROVED	DESIGN BY	DATE
CHECKED	JOB NO.	DATE
DRAWN	SCALE	PROJECT
ISSUE	NO.	DATE
DATE	NO.	DATE

03-7101