

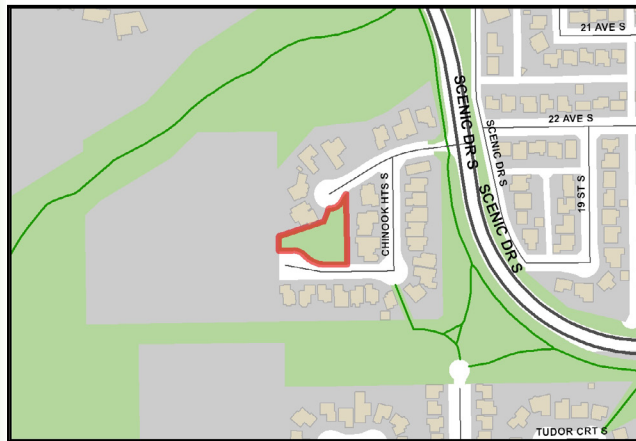
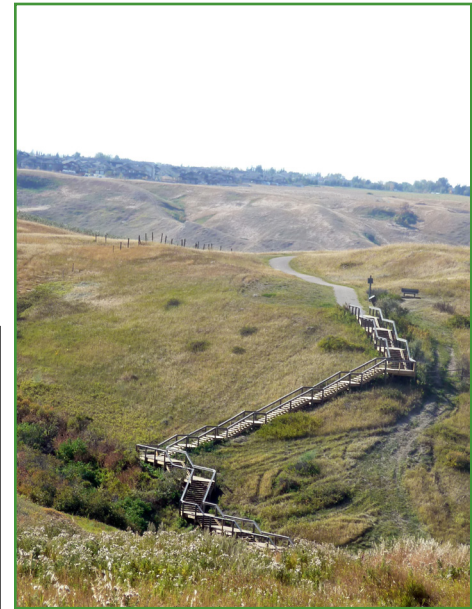
CHINOOK PARK

35 Chinook Heights South

South Side



CITY OF
Lethbridge



Chinook Park is a small community pocket park located in Chinook Heights. There is just enough open space for little ones to let their imaginations soar.

The park features a scenic view of the coulees although there are no formal trails or access points to the coulees from this park.

This park is not heavily used, which makes it ideal for relaxation or a quiet family picnic.

The park has two access points: one on the north side and one on the south side. Both have ample street parking.

Simply put, this park is a nice quiet bit of green space.